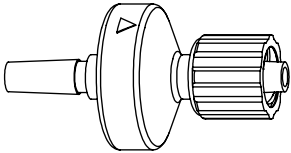
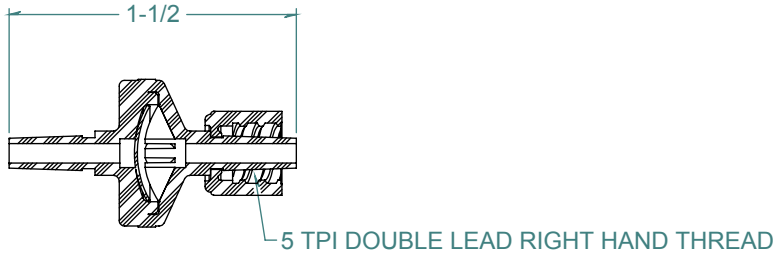


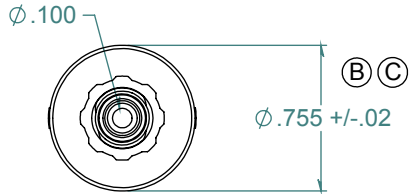
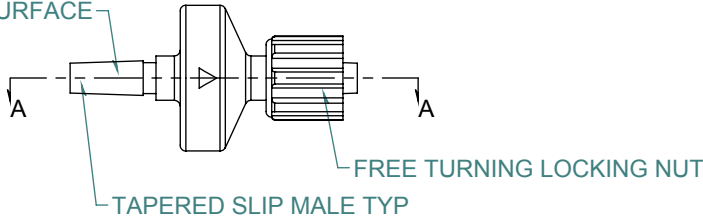
| REVISION HISTORY | | | |
|------------------|-------------------|------------|----------|
| REV. | DESCRIPTION | DATE | APPROVED |
| A | REDRAWN w/ CHANGE | 10/05/2011 | KAH |
| B | ECOR #A0578 | 10/05/2011 | KAH |
| C | ECOR #A0956 | 05/18/2016 | KAH |

SECTION A-A



2X NO PARTING LINE ALLOWED ON THIS SURFACE

FLOW →



FREE SAMPLES ARE AVAILABLE FOR TESTING. CONTACT CUSTOMER SERVICE

DIMENSIONS ARE IN INCHES UNLESS SPECIFIED. TOLERANCES ARE:
 FRACTIONS +/- .015
 2 PLACE DECIMAL +/- .010
 3 PLACE DECIMAL +/- .005
 ANGLE NOTED

MATERIAL:
 POLYCARBONATE, NATURAL

FINISH: RMS 109.2
 POLISHED LUERS

ARK-PLAS PRODUCTS, INC.

HFX16-YC0
 MALE x MALE LUER CHECK VALVE
 w/ SILICONE DIAPHRAGM

LUERS DESIGNED TO ISO STANDARDS

PROPRIETARY AND CONFIDENTIAL
 THE INFORMATION CONTAINED IN THIS DRAWING IS THE SOLE PROPERTY OF ARK-PLAS PRODUCTS, INC. ANY REPRODUCTION IN PART OR AS A WHOLE WITHOUT THE WRITTEN PERMISSION OF ARK-PLAS PRODUCTS, INC. IS PROHIBITED.

| | | | |
|----------|------------------------------------|----------------------|------------|
| SIZE | JOB # AP309 | DRAWN BY: <i>KAH</i> | REV. LEVEL |
| A | SCALE: 1:1 DO NOT SCALE DRAWING | SHEET 1 OF 1 | C |