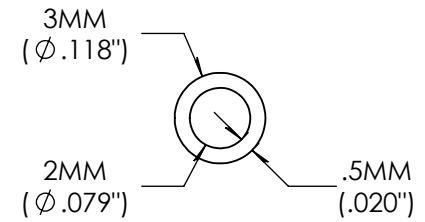
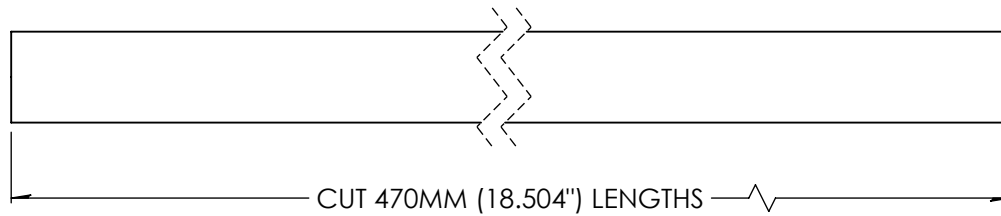


Revision History

Rev.	Description	Date	Approved
A	Print Release Date	03/19/2026	JWM
B	Tolerances Updated	04/15/2026	JWM



Unless otherwise specified tolerances are in MM

METRIC Tolerances

Length:	+/-5.0
Outer Diameter:	+.05/- .1
Wall Thickness:	+/- .1

Material:

Pink BASF 1195A / 95D

ARKPLAS

Part #: 12031475A

Description:

3mm OD x 2mm ID x .5mm Wall Thickness Tubing
Cut 470mm Lengths

Size	Job#: 12031475A	Sheet 1 of 1	Rev
A	Scale: 4:1	Drawn By: JWM	B