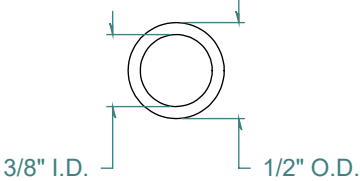
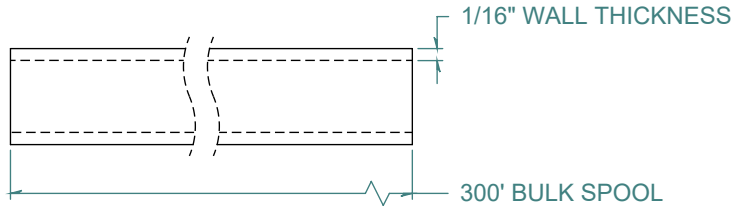
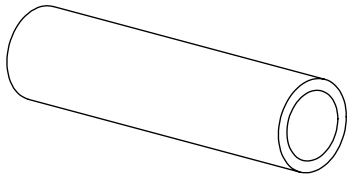


| REVISION HISTORY | | | |
|------------------|--------------------|------------|----------|
| REV. | DESCRIPTION | DATE | APPROVED |
| A | REDRAWN w/o CHANGE | 05/12/2009 | KAH |



DIMENSIONS ARE IN INCHES UNLESS SPECIFIED. TOLERANCES ARE:

| | |
|----------------|----------|
| INNER DIAMETER | +/- .005 |
| OUTER DIAMETER | +/- .005 |
| WALL THICKNESS | +/- .003 |

LENGTH TOLERANCES ARE:

| | |
|--------------|-------------|
| 120. OR MORE | +5% / -0 |
| 24.1 TO 120. | +1.0 / -0 |
| 12.1 TO 24.0 | + .5 / -0 |
| 6.1 TO 12.0 | + .25 / -0 |
| .375 TO 6.0 | + .125 / -0 |

ARK-PLAS PRODUCTS, INC.

TAX79-AN1
 3/8" I.D. x 1/2" O.D.
 1/16" WALL THICKNESS / 300' BULK SPOOL

BLACK TUBING

MATERIAL: POLYURETHANE / ETHER BASED - 85 DUROMETER

FREE SAMPLES ARE AVAILABLE FOR TESTING. CONTACT CUSTOMER SERVICE

PROPRIETARY AND CONFIDENTIAL

THE INFORMATION CONTAINED IN THIS DRAWING IS THE SOLE PROPERTY OF ARK-PLAS PRODUCTS, INC. ANY REPRODUCTION IN PART OR AS A WHOLE WITHOUT THE WRITTEN PERMISSION OF ARK-PLAS PRODUCTS, INC. IS PROHIBITED.

| | | | |
|------------------|------------------------------------|----------------------|------------|
| SIZE A | JOB # APT118 | DRAWN BY: <i>KAH</i> | REV. LEVEL |
| | SCALE: 1:1 DO NOT SCALE DRAWING | SHEET 1 OF 1 | A |