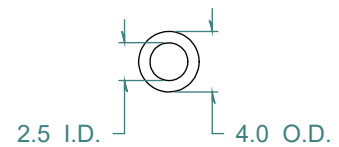
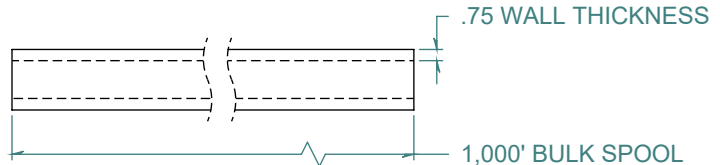
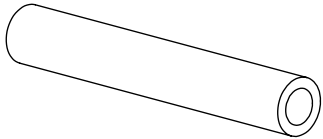


REVISION HISTORY			
REV.	DESCRIPTION	DATE	APPROVED
A	REDRAWN w/o CHANGE	07/23/2009	KAH



DIMENSIONS ARE IN METRIC UNLESS SPECIFIED. TOLERANCES ARE:

INNER DIAMETER	+/- .127
OUTER DIAMETER	+/- .127
WALL THICKNESS	+/- .076

LENGTH TOLERANCES ARE:

3048. OR MORE	+5% / -0
612.14 TO 3048.	+25.4 / -0
307.34 TO 609.6	+12.7 / -0
154.94 TO 304.8	+6.35 / -0
9.525 TO 152.4	+3.175 / -0

ARK-PLAS PRODUCTS, INC.

TAX35-AN0
 2.5 I.D. x 4.0 O.D.
 .075 WALL THICKNESS / 1,000' BULK SPOOL

TUBING, NATURAL

MATERIAL: POLYURETHANE, ETHER BASED - 85 DUROMETER			
SIZE	JOB #	DRAWN BY:	REV. LEVEL
A	APT109	KAH	A
SCALE: 2:1 DO NOT SCALE DRAWING		SHEET 1 OF 1	

FREE SAMPLES ARE AVAILABLE FOR TESTING. CONTACT CUSTOMER SERVICE

PROPRIETARY AND CONFIDENTIAL

THE INFORMATION CONTAINED IN THIS DRAWING IS THE SOLE PROPERTY OF ARK-PLAS PRODUCTS, INC. ANY REPRODUCTION IN PART OR AS A WHOLE WITHOUT THE WRITTEN PERMISSION OF ARK-PLAS PRODUCTS, INC. IS PROHIBITED.