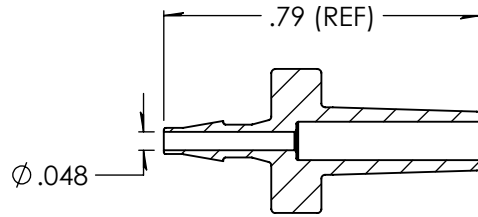
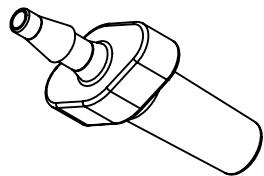
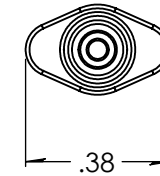
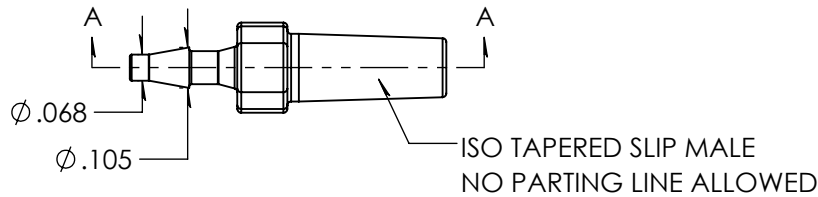


Revision History

Rev.	Description	Date	Approved
A	Redrawn W/Change	10/02/2009	KAH
B	ECOR #A0144	10/02/2009	KAH
C	ECOR #A0939	03/16/2016	KAH
D	ECOR #A0993	11/17/2016	KAH
E	Luer updated	07/16/2025	JWM



SECTION A-A
SCALE 2 : 1



Unless otherwise specified tolerances are in inches

SAE Tolerances

Fractions:	+/- .015
2 Place Decimal:	+/- .010
3 Place Decimal:	+/- .005
Angle:	+/- 1/2*

Material:

Natural Polypropylene
P4C5Z-027

ARKPLAS

Part #: LCX71-PP0

Description:

1/16" Barbed Male Slip Luer
Luer Designed to ISO 80369-7 Standard

Size	Job#:	Sheet	Rev
A	LCX71	1 of 1	E
	Scale: 2:1	Drawn By: JWM	