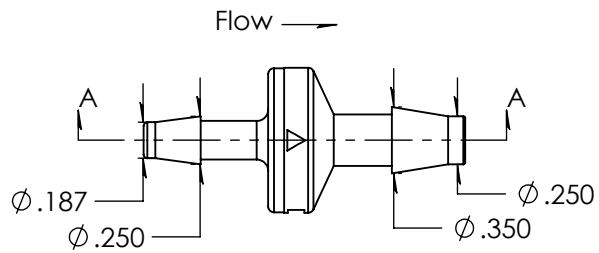
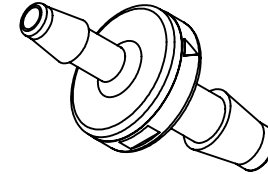
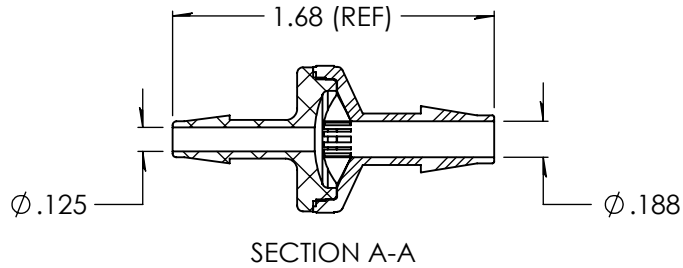


Revision History

Rev.	Description	Date	Approved
A	Redrawn w/Change	02/11/2010	KAH
B	ECOR #A0559	02/11/2010	KAH
C	1/4" ID Updated	10/31/2023	JWM



Unless otherwise specified tolerances are in inches

SAE Tolerances

Fractions:	+/- .015
2 Place Decimal:	+/- .010
3 Place Decimal:	+/- .005
Angle:	+/- 1/2*

Material:

Natural Polypropylene P4C5Z-027
Viton Diaphragm / MED 9021 Lubrication

ARKPLAS

Part #: HDX20-PP0

Description:
3/16" x 1/4" Enlarging Check Valve

A	Size	Job#: HDX20	Sheet 1 of 1	Rev
	Scale: 1:1	Drawn By: JWM	C	

NOTE:
Minimum crack pressure - .5psi
Minimum seal pressure - 1.9psi