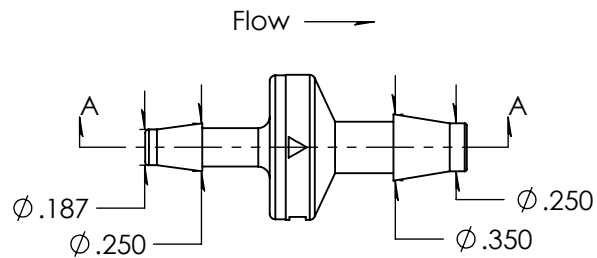
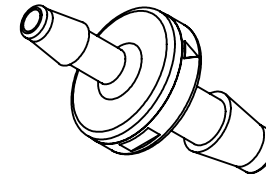
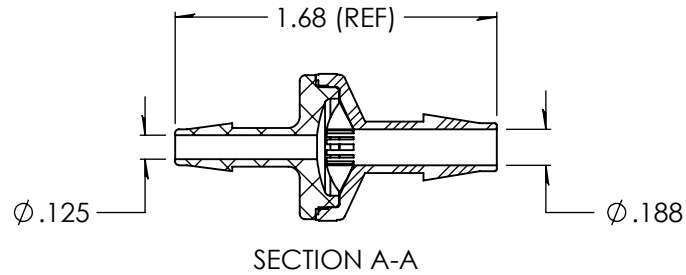


Revision History

Rev.	Description	Date	Approved
A	Redrawn w/Change	02/11/2010	KAH
B	ECOR #A0559	02/11/2010	KAH
C	1/4" ID Updated	10/31/2023	JWM



NOTE:
 Minimum crack pressure - .5psi
 Minimum seal pressure - 1.9psi

Unless otherwise specified tolerances are in inches SAE Tolerances		ARKPLAS	
Fractions: +/- .015 2 Place Decimal: +/- .010 3 Place Decimal: +/- .005 Angle: +/- 1/2*		Part #: HDX20-NY0 Description: 3/16" x 1/4" Enlarging Check Valve	
Material: Natural Nylon 101FNC010 Neoprene Diaphragm / MED 9021 Lubrication		Size A	Job#: HDX20 Scale: 1:1
		Sheet 1 of 1 Drawn By: JWM	Rev C