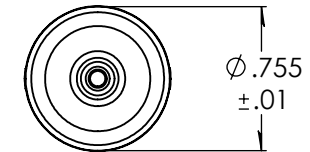
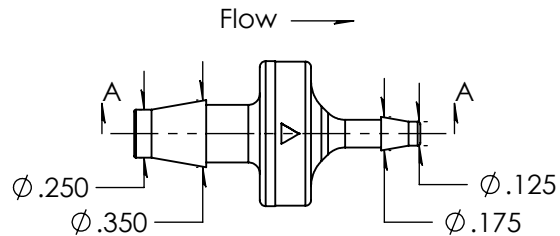
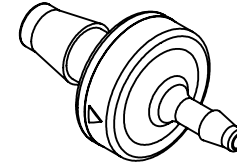
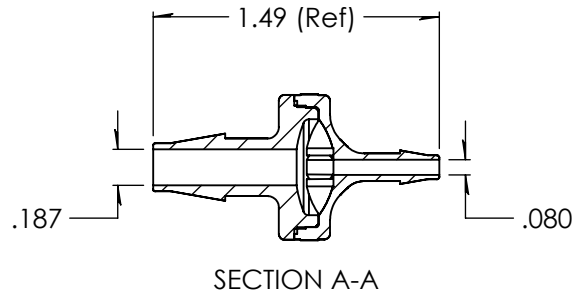


Revision History

Rev.	Description	Date	Approved
A	Print Release Date	02/15/2010	KAH
B	ECOR #A0563	02/15/2010	KAH
C	ECO #A1212	02/14/2020	KAH
D	1/4" ID Update	10/26/2023	JWM



NOTE:
 Minimum crack pressure - .5psi
 Minimum seal pressure - 1.9psi

Unless otherwise specified tolerances are in inches

SAE Tolerances

Fractions:	+/- .015
2 Place Decimal:	+/- .010
3 Place Decimal:	+/- .005
Angle:	+/- 1/2*

Material:

Natural Polycarbonate 201-15
 Silicone Diaphragm / MED 9021 Lubrication



Part #: HCX66-YC0

Description:
 1/4" x 1/8" Reducing Check Valve

A	Job#: HCX66	Sheet 1 of 1	D
	Scale: 1:1	Drawn By: JWM	