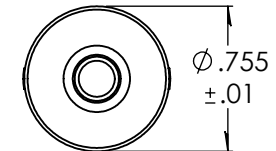
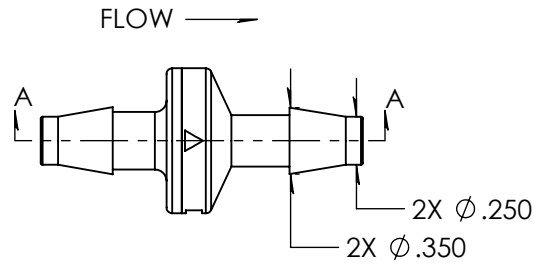
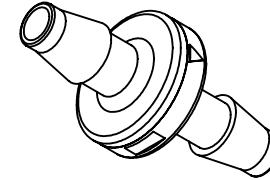
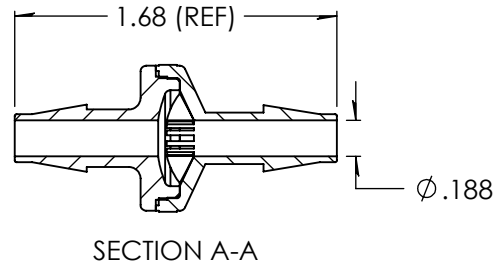


Revision History

Rev.	Description	Date	Approved
A	Redrawn w/Change	02/18/2010	KAH
B	ECOR #A0576	02/18/2010	KAH
C	ECO	08/22/2023	JWM



NOTE:
Minimum crack pressure - .5psi
Minimum seal pressure - 1.9psi

Unless otherwise specified tolerances are in inches

SAE Tolerances

Fractions:	+/- .015
2 Place Decimal:	+/- .010
3 Place Decimal:	+/- .005
Angle:	+/- 1/2*

Material:

Natural Polypropylene P4C5Z-027
Viton Diaphragm / MED 9021 Lubrication

ARKPLAS

Part #: HAX24-PP0

Description:
1/4" x 1/4" Standard Check Valve

Size	Job#:	Sheet	Rev
A	HAX24	1 of 1	C
	Scale: 1:1	Drawn By: JWM	