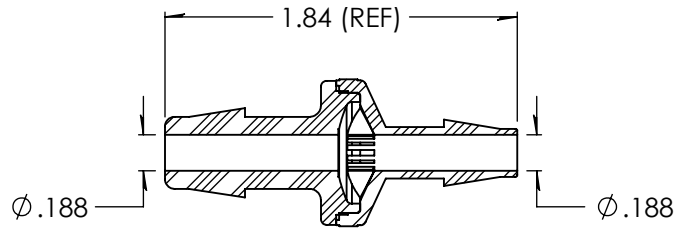
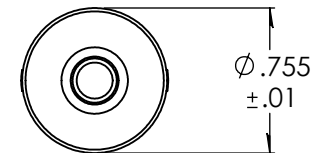
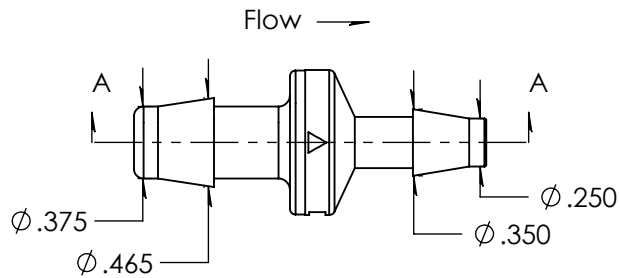
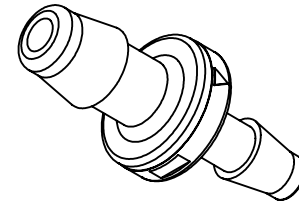


### Revision History

Rev.	Description	Date	Approved
A	Redrawn w/Change	02/16/2010	KAH
B	ECOR #A0567	02/16/2010	KAH
C	1/4" ID Updated	10/24/2023	JWM



SECTION A-A



Unless otherwise specified tolerances are in inches

#### SAE Tolerances

Fractions:	+/- .015
2 Place Decimal:	+/- .010
3 Place Decimal:	+/- .005
Angle:	+/- 1/2*

#### Material:

Natural Nylon 101FNC010  
Silicone Diaphragm / MED 9021 Lubrication

# ARKPLAS

Part #: HCX10-NY0

Description:  
3/8" x 1/4" Reducing Check Valve

NOTE:  
Minimum crack pressure - .5psi  
Minimum seal pressure - 1.9psi

A	Size	Job#: HCX10	Sheet 1 of 1	Rev
	Scale: 1:1	Drawn By: JWM	C	