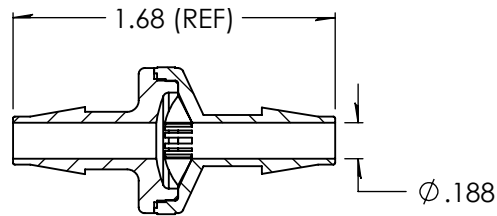
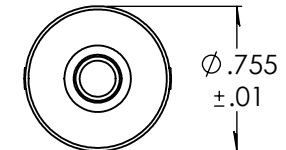
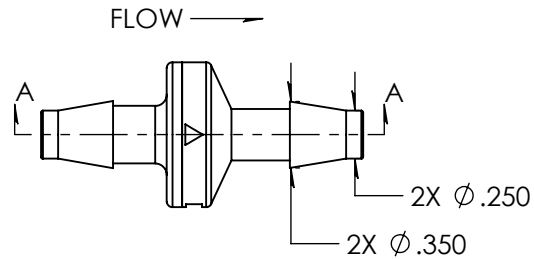
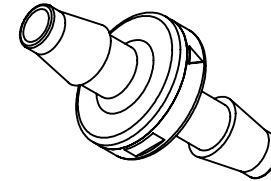


Revision History

Rev.	Description	Date	Approved
A	Redrawn w/Change	02/18/2010	KAH
B	ECOR #A0576	02/18/2010	KAH
C	ECO	08/22/2023	JWM



SECTION A-A



Unless otherwise specified tolerances are in inches

SAE Tolerances

Fractions:	+/- .015
2 Place Decimal:	+/- .010
3 Place Decimal:	+/- .005
Angle:	+/- 1/2*

Material:

Natural Polycarbonate 201-15
Silicone Diaphragm / MED 9021 Lubrication

ARKPLAS

Part #: HAX24-YC0

Description:
1/4" x 1/4" Standard Check Valve

Size A	Job#: HAX24	Sheet 1 of 1	Rev C
	Scale: 1:1	Drawn By: JWM	

NOTE:
Minimum crack pressure - .5psi
Minimum seal pressure - 1.9psi