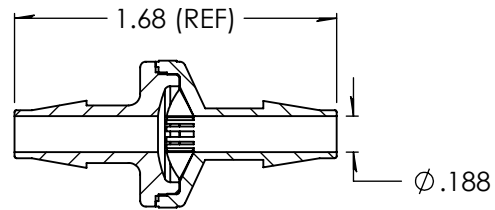
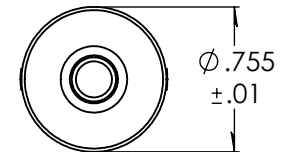
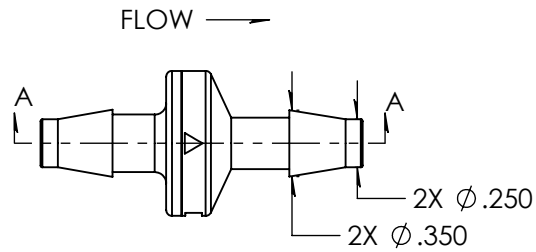
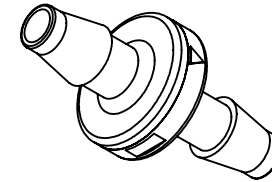


### Revision History

Rev.	Description	Date	Approved
A	Redrawn w/o Change	02/18/2010	KAH
B	ECOR #A0576	02/18/2010	KAH
C	ECO	08/16/2023	JWM



SECTION A-A



NOTE:  
 Minimum crack pressure - .5psi  
 Minimum seal pressure - 1.9psi

Unless otherwise specified tolerances are in inches

#### SAE Tolerances

Fractions:	+/- .015
2 Place Decimal:	+/- .010
3 Place Decimal:	+/- .005
Angle:	+/- 1/2*

#### Material:

Natural Nylon 101FNC010  
 Silicone Diaphragm / MED 9021 Lubrication



Part #: HAX24-NY0

Description:  
 1/4" x 1/4" Standard Check Valve

Size <b>A</b>	Job#: HAX24	Sheet 1 of 1	Rev <b>C</b>
	Scale: 1:1	Drawn By: JWM	