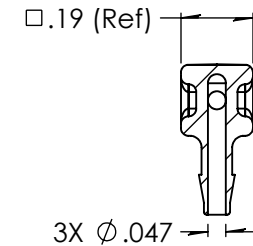
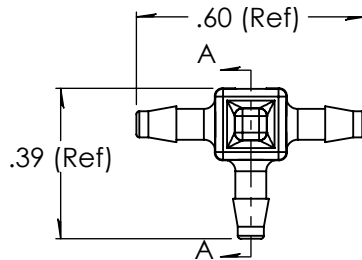
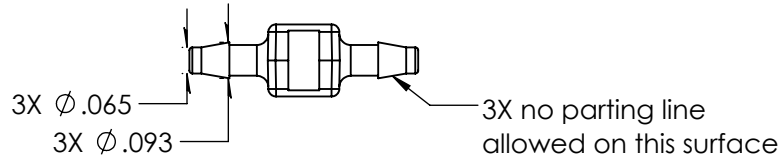
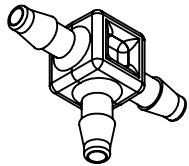


Revision History

| Rev. | Description | Date | Approved |
|------|------------------|------------|----------|
| A | Redrawn w/Change | 04/07/2010 | KAH |
| B | ECOR #A0144 | 04/07/2010 | KAH |
| C | ECOR #A0598 | 04/07/2010 | KAH |
| D | ECOR #A0896 | 10/02/2015 | KAH |
| E | ECO #A1175 | 08/13/2019 | KAH |
| F | Callouts Updated | 01/24/2024 | JWM |



SECTION A-A
SCALE 2 : 1



Unless otherwise specified tolerances are in inches

SAE Tolerances

| | |
|------------------|----------|
| Fractions: | +/- .015 |
| 2 Place Decimal: | +/- .010 |
| 3 Place Decimal: | +/- .005 |
| Angle: | +/- 1/2* |

Material:
Natural Kynar
720

ARKPLAS

Part #: MFA66-DF0

Description:
1/16" x 1/16" x 1/16" Premium Grade Barbed Tee Connector

| | | | |
|----------|-------------|---------------|----------|
| A | Job#: MFA66 | Sheet 1 of 1 | F |
| | Scale: 2:1 | Drawn By: JWM | |