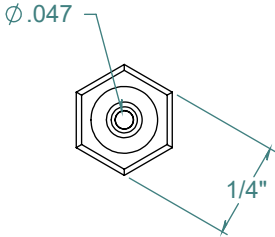
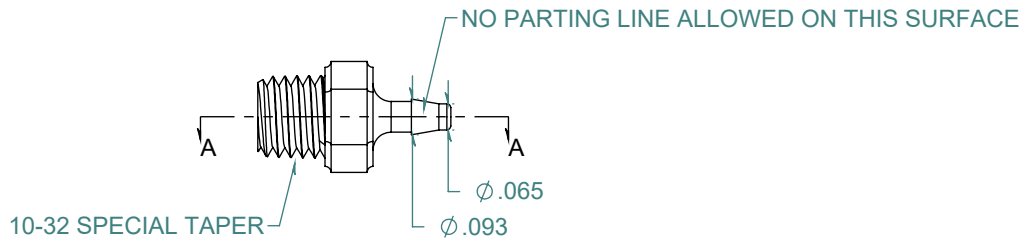
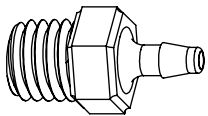
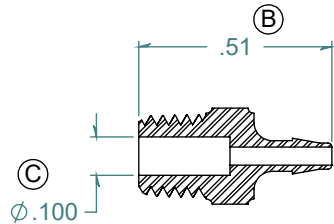


| REVISION HISTORY | | | |
|------------------|--------------------|------------|----------|
| REV. | DESCRIPTION | DATE | APPROVED |
| A | REDRAWN w/o CHANGE | 04/07/2010 | KAH |
| B | ECOR #A0599 | 04/07/2010 | KAH |
| C | ECOR #A0953 | 05/13/2016 | KAH |

SECTION A-A
SCALE 2 : 1



FREE SAMPLES ARE AVAILABLE FOR TESTING. CONTACT CUSTOMER SERVICE

DIMENSIONS ARE IN INCHES UNLESS SPECIFIED. TOLERANCES ARE:
 FRACTIONS +/- .015
 2 PLACE DECIMAL +/- .010
 3 PLACE DECIMAL +/- .005
 ANGLES NOTED

ARK-PLAS PRODUCTS, INC.

MEX29-YC0
 1/16 x 10-32 PREMIUM GRADE
 THREADED CONNECTOR

MATERIAL:
 POLYCARBONATE, NATURAL

FINISH:
 RMS 109.2 / POLISHED BARB

| | | | |
|------------------------------------|-------------|----------------------|------------------------|
| SIZE A | JOB # MP232 | DRAWN BY: <i>KAH</i> | REV. LEVEL C |
| SCALE: 2:1 DO NOT SCALE DRAWING | | SHEET 1 OF 1 | |

PROPRIETARY AND CONFIDENTIAL
 THE INFORMATION CONTAINED IN THIS DRAWING IS THE SOLE PROPERTY OF ARK-PLAS PRODUCTS, INC. ANY REPRODUCTION IN PART OR AS A WHOLE WITHOUT THE WRITTEN PERMISSION OF ARK-PLAS PRODUCTS, INC. IS PROHIBITED.