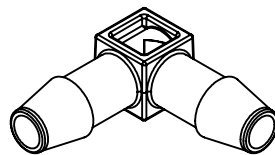
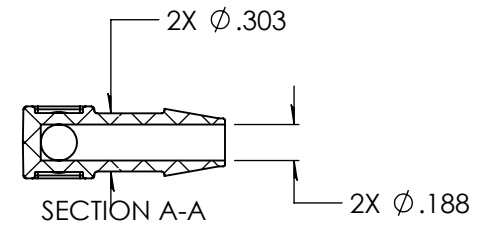
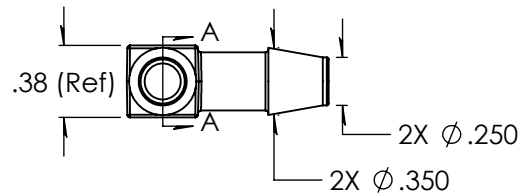
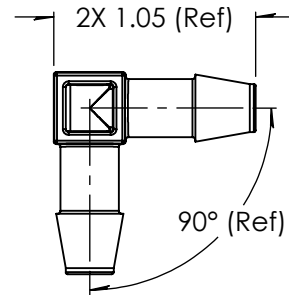


Revision History

Rev.	Description	Date	Approved
A	Print release date	10/01/2009	KAH
B	ECOR #A0144	10/01/2009	KAH
C	ECOR #A0467	10/01/2009	KAH
D	ECOR #A1023	05/17/2017	KAH
E	ECO	04/27/2023	JWM



Unless otherwise specified tolerances are in inches

SAE Tolerances

Fractions:	+/- .015
2 Place Decimal:	+/- .010
3 Place Decimal:	+/- .005
Angle:	+/- 1/2*

Material:
Natural Polycarbonate
201-15

ARKPLAS

Part #: MCX87-YC0

Description:
1/4" x 1/4" Barbed Elbow Connector

Size	Job#:	Sheet	Rev
A	MCX87	1 of 1	E
	Scale: 1:1	Drawn By: JWM	