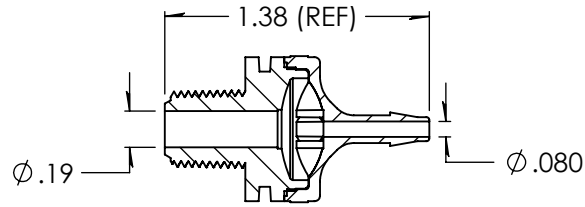
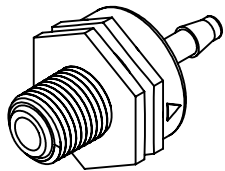
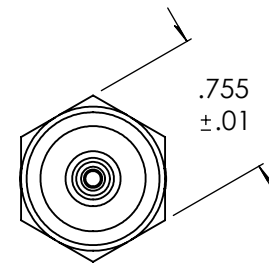
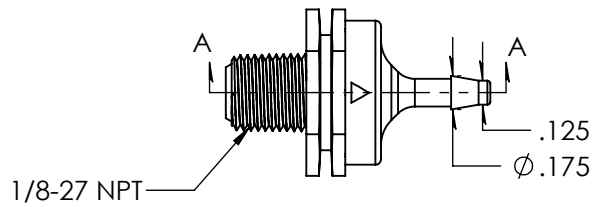


### Revision History

Rev.	Description	Date	Approved
A	Redrawn w/o Change	01/26/2010	KAH
B	ECOR #A0661	02/24/2011	KAH
C	1/8" Half Updated	02/26/2025	JWM



SECTION A-A



Unless otherwise specified tolerances are in inches

#### SAE Tolerances

Fractions:	+/- .015
2 Place Decimal:	+/- .010
3 Place Decimal:	+/- .005
Angle:	+/- 1/2*

#### Material:

Natural Nylon  
101FNC010

# ARKPLAS

Part #:                    HEX11-NY0

Description:  
1/8-27 NPT x 1/8" Check Valve  
Silicone Diaphragm

Size	Job#:	Sheet	Rev
<b>A</b>	HEX11	1 of 1	<b>C</b>
Scale:	1:1	Drawn By:	JWM