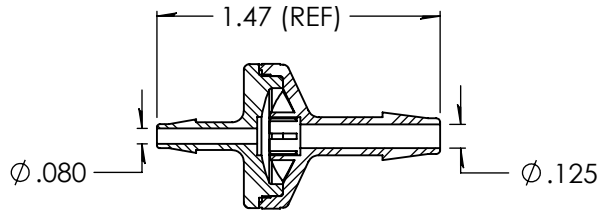
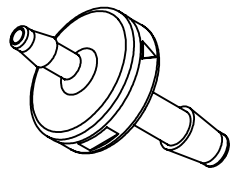
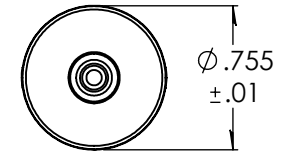
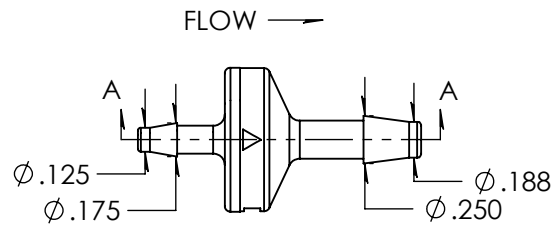


Revision History

Rev.	Description	Date	Approved
A	Redrawn w/Change	02/09/2010	KAH
B	ECOR #A0556	02/09/2010	KAH
C	3/16" Half Updated	02/26/2025	JWM



SECTION A-A



Unless otherwise specified tolerances are in inches

SAE Tolerances

Fractions:	+/- .015
2 Place Decimal:	+/- .010
3 Place Decimal:	+/- .005
Angle:	+/- 1/2*

Material:

Natural Nylon
101FNC010

ARKPLAS

Part #: HDX42-NY0

Description:
1/8" x 3/16" Enlarging Check Valve
Neoprene Diaphragm

Size A	Job#: HDX42	Sheet 1 of 1	Rev C
	Scale: 1:1	Drawn By: JWM	