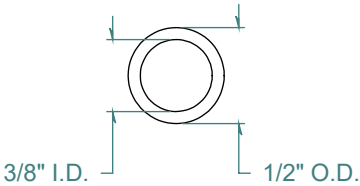
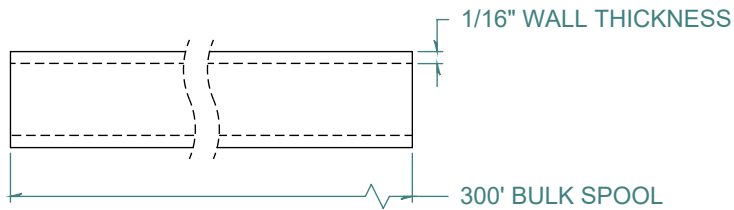
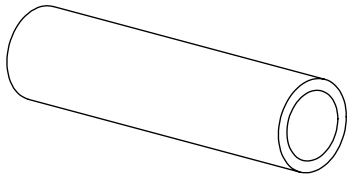


REVISION HISTORY			
REV.	DESCRIPTION	DATE	APPROVED
A	REDRAWN w/o CHANGE	05/12/2009	KAH



DIMENSIONS ARE IN INCHES UNLESS SPECIFIED. TOLERANCES ARE:

INNER DIAMETER	+/- .005
OUTER DIAMETER	+/- .005
WALL THICKNESS	+/- .003

LENGTH TOLERANCES ARE:

120. OR MORE	+5% / -0
24.1 TO 120.	+1.0 / -0
12.1 TO 24.0	+ .5 / -0
6.1 TO 12.0	+ .25 / -0
.375 TO 6.0	+ .125 / -0

ARK-PLAS PRODUCTS, INC.

TAX26-AEY
 3/8" I.D. x 1/2" O.D.
 1/16" WALL THICKNESS / 300' BULK SPOOL

YELLOW TRANSPARENT TUBING

FREE SAMPLES ARE AVAILABLE FOR TESTING. CONTACT CUSTOMER SERVICE

PROPRIETARY AND CONFIDENTIAL

THE INFORMATION CONTAINED IN THIS DRAWING IS THE SOLE PROPERTY OF ARK-PLAS PRODUCTS, INC. ANY REPRODUCTION IN PART OR AS A WHOLE WITHOUT THE WRITTEN PERMISSION OF ARK-PLAS PRODUCTS, INC. IS PROHIBITED.

MATERIAL: POLYURETHANE / ETHER BASED - 905 DUROMETER			
SIZE	JOB # APT212	DRAWN BY: <i>KAH</i>	REV. LEVEL
A	SCALE: 1:1 DO NOT SCALE DRAWING	SHEET 1 OF 1	A