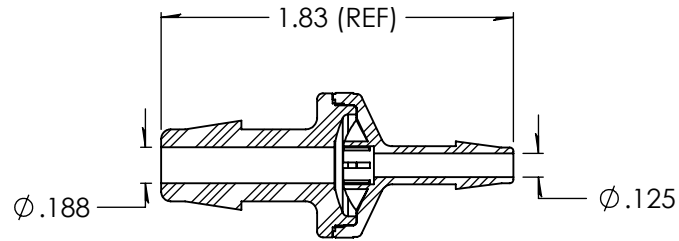
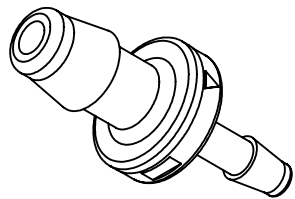
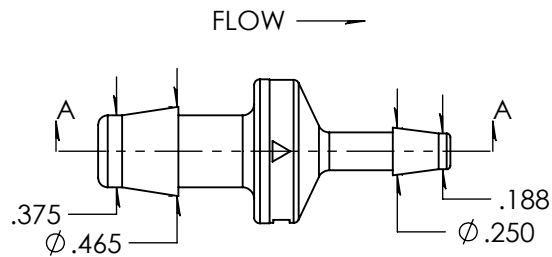


Revision History

Rev.	Description	Date	Approved
A	Redrawn w/Change	02/15/2010	KAH
B	ECOR #A0566	02/15/2010	KAH
C	ECOR #A0988	10/13/2016	KAH
D	3/16" Half Updated	02/19/2025	JWM



SECTION A-A



Unless otherwise specified tolerances are in inches

SAE Tolerances

Fractions:	+/- .015
2 Place Decimal:	+/- .010
3 Place Decimal:	+/- .005
Angle:	+/- 1/2*

Material:

Clear Polycarbonate
Calibre 201-15

ARKPLAS

Part #: HCX50-YC0

Description:
3/8" X 3/16" Reducing Check Valve
Silicone Diaphragm

Size	Job#: HCX50	Sheet 1 of 1	Rev
A	Scale: 1:1	Drawn By: JWM	D