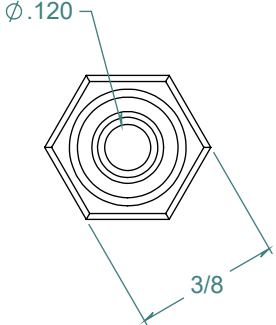
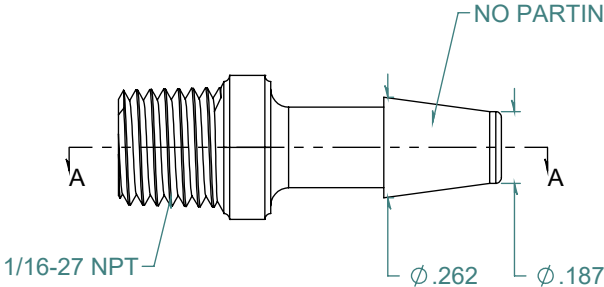
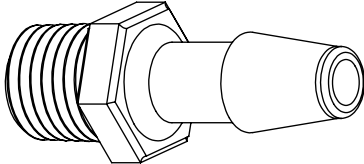
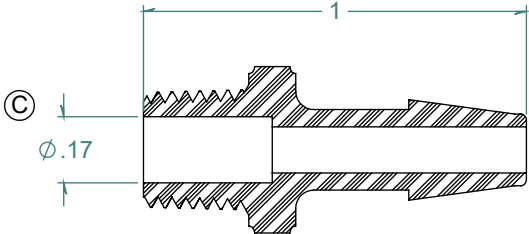


| REVISION HISTORY |             |            |          |
|------------------|-------------|------------|----------|
| REV.             | DESCRIPTION | DATE       | APPROVED |
| A                | ECOR #A1100 | 12/06/2017 | KAH      |
| B                | ECOR #A0953 | 07/02/2018 | KAH      |
| C                | ECOR #A0953 | 07/31/2018 | KAH      |

SECTION A-A



DIMENSIONS ARE IN INCHES UNLESS SPECIFIED. TOLERANCES ARE:  
 FRACTIONS  $\pm .015$   
 2 PLACE DECIMAL  $\pm .010$   
 3 PLACE DECIMAL  $\pm .005$   
 ANGLE  $\pm 1/2^\circ$

**ARK-PLAS PRODUCTS, INC.**

MEX11-NY2  
 3/16 x 1/16-27 NPT PREMIUM GRADE  
 BARBED THREADED CONNECTOR

MATERIAL:  
 NYLON, WHITE

FINISH:  
 RMS 109.2, POLISHED BARB

|          |                                    |                      |            |
|----------|------------------------------------|----------------------|------------|
| SIZE     | JOB # AP703                        | DRAWN BY: <i>KAH</i> | REV. LEVEL |
| <b>A</b> | SCALE: 2:1<br>DO NOT SCALE DRAWING | SHEET 1 OF 1         | <b>C</b>   |

FREE SAMPLES ARE AVAILABLE FOR TESTING. CONTACT CUSTOMER SERVICE

**PROPRIETARY AND CONFIDENTIAL**

THE INFORMATION CONTAINED IN THIS DRAWING IS THE SOLE PROPERTY OF ARK-PLAS PRODUCTS, INC. ANY REPRODUCTION IN PART OR AS A WHOLE WITHOUT THE WRITTEN PERMISSION OF ARK-PLAS PRODUCTS, INC. IS PROHIBITED.