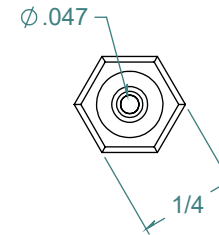
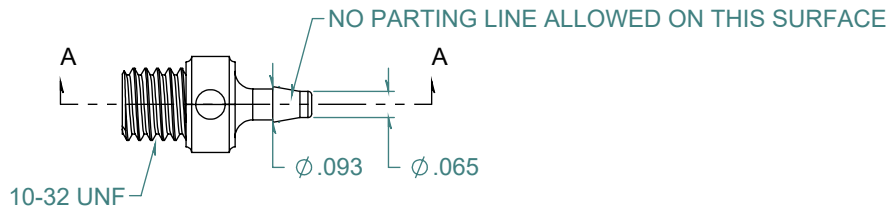
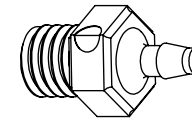
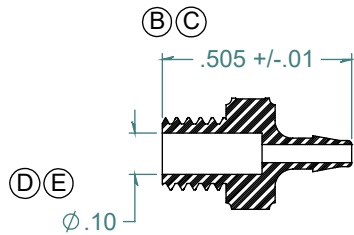


SECTION A-A
SCALE 2 : 1



| REVISION HISTORY | | | |
|------------------|-------------------|------------|----------|
| REV. | DESCRIPTION | DATE | APPROVED |
| A | REDRAWN w/ CHANGE | 07/15/2009 | KAH |
| B | ECOR #A0369 | 07/15/2009 | KAH |
| C | ECOR #A0828 | 11/05/2013 | KAH |
| D | ECOR #A0953 | 05/13/2016 | KAH |
| E | ECOR #A0972 | 07/13/2016 | KAH |

DIMENSIONS ARE IN INCHES UNLESS SPECIFIED. TOLERANCES ARE:
 FRACTIONS +/- .015
 2 PLACE DECIMAL +/- .010
 3 PLACE DECIMAL +/- .005
 ANGLES NOTED

ARK-PLAS PRODUCTS, INC.

MEX37-YC0
 10-32 UNF PREMIUM GRADE
 BARBED THREADED CONNECTOR

FREE SAMPLES ARE AVAILABLE FOR TESTING. CONTACT CUSTOMER SERVICE

MATERIAL:
 POLYCARBONATE, NATURAL

FINISH:
 RMS 109.2 / POLISHED BARB

| | | | |
|------------------------------------|--------------|----------------------|------------------------|
| SIZE A | JOB # AP591A | DRAWN BY: <i>KAH</i> | REV. LEVEL E |
| SCALE: 2:1 DO NOT SCALE DRAWING | | SHEET 1 OF 1 | |

PROPRIETARY AND CONFIDENTIAL

THE INFORMATION CONTAINED IN THIS DRAWING IS THE SOLE PROPERTY OF ARK-PLAS PRODUCTS, INC. ANY REPRODUCTION IN PART OR AS A WHOLE WITHOUT THE WRITTEN PERMISSION OF ARK-PLAS PRODUCTS, INC. IS PROHIBITED.