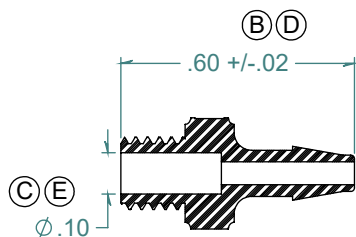
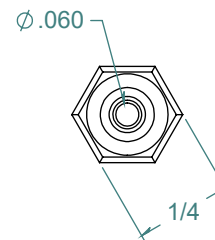
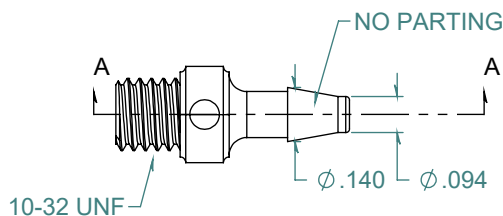
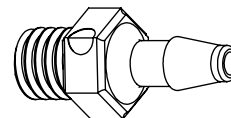


SECTION A-A
SCALE 2 : 1



REVISION HISTORY			
REV.	DESCRIPTION	DATE	APPROVED
A	PART ISSUE DATE	07/15/2009	KAH
B	ECOR #A0370	07/15/2009	KAH
C	ECOR #A0953	05/13/2016	KAH
D	ECOR #A0967	06/29/2016	KAH
E	ECOR #A1105	12/06/2017	KAH



FREE SAMPLES ARE AVAILABLE FOR TESTING. CONTACT CUSTOMER SERVICE

DIMENSIONS ARE IN INCHES UNLESS SPECIFIED. TOLERANCES ARE:
 FRACTIONS +/- .015
 2 PLACE DECIMAL +/- .010
 3 PLACE DECIMAL +/- .005
 ANGLES NOTED

ARK-PLAS PRODUCTS, INC.

MEX72-NY2
 3/32 x 10-32 UNF PREMIUM GRADE
 BARB THREADED CONNECTOR

MATERIAL:
 NYLON, WHITE

FINISH:
 RMS 109.2 / POLISHED BARB

SIZE A	JOB # AP591B	DRAWN BY: <i>KAH</i>	REV. LEVEL
	SCALE: 2:1 DO NOT SCALE DRAWING	SHEET 1 OF 1	E

PROPRIETARY AND CONFIDENTIAL
 THE INFORMATION CONTAINED IN THIS DRAWING IS THE SOLE PROPERTY OF
 ARK-PLAS PRODUCTS, INC. ANY REPRODUCTION IN PART OR AS A WHOLE
 WITHOUT THE WRITTEN PERMISSION OF ARK-PLAS PRODUCTS, INC. IS PROHIBITED.