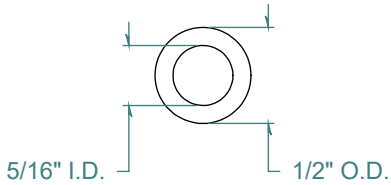
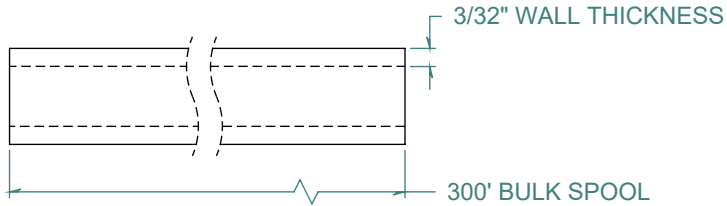
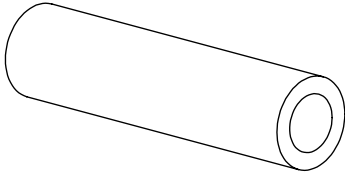


REVISION HISTORY			
REV.	DESCRIPTION	DATE	APPROVED
A	REDRAWN w/o CHANGE	05/11/2009	KAH



DIMENSIONS ARE IN INCHES UNLESS SPECIFIED. TOLERANCES ARE:

INNER DIAMETER +/- .005
 OUTER DIAMETER +/- .005
 WALL THICKNESS +/- .003

LENGTH TOLERANCES ARE:

120. OR MORE +5% / -0
 24.1 TO 120. +1.0 / -0
 12.1 TO 24.0 +.5 / -0
 6.1 TO 12.0 +.25 / -0
 .375 TO 6.0 +.125 / -0

ARK-PLAS PRODUCTS, INC.

TCX49-FA1
 5/16" I.D. x 1/2" O.D.
 3/32" WALL THICKNESS / 300' BULK SPOOL

BLACK TUBING

MATERIAL: VINYL (PVC) - 68 DUROMETER

FREE SAMPLES ARE AVAILABLE FOR TESTING. CONTACT CUSTOMER SERVICE

PROPRIETARY AND CONFIDENTIAL

THE INFORMATION CONTAINED IN THIS DRAWING IS THE SOLE PROPERTY OF ARK-PLAS PRODUCTS, INC. ANY REPRODUCTION IN PART OR AS A WHOLE WITHOUT THE WRITTEN PERMISSION OF ARK-PLAS PRODUCTS, INC. IS PROHIBITED.

SIZE	JOB #	DRAWN BY:	REV. LEVEL
A	APT072	KAH	A
SCALE: 1:1 DO NOT SCALE DRAWING		SHEET 1 OF 1	