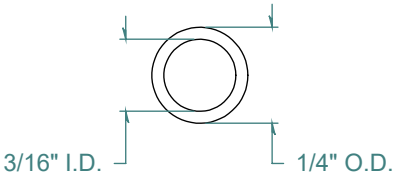
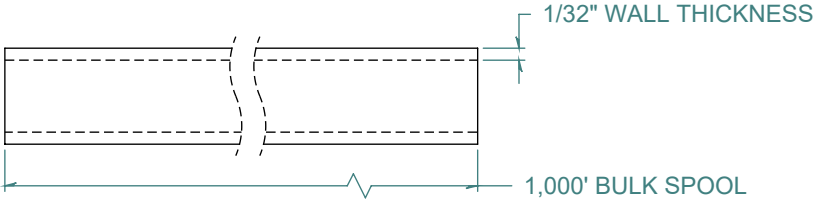
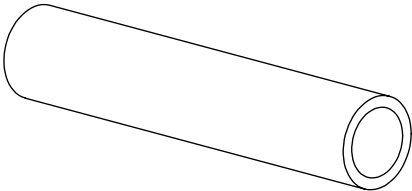


REVISION HISTORY			
REV.	DESCRIPTION	DATE	APPROVED
A	REDRAWN w/o CHANGE	05/04/2009	KAH



DIMENSIONS ARE IN INCHES UNLESS SPECIFIED. TOLERANCES ARE:

INNER DIAMETER +/- .005  
 OUTER DIAMETER +/- .005  
 WALL THICKNESS +/- .003

LENGTH TOLERANCES ARE:

120. OR MORE +5% / -0  
 24.1 TO 120. +1.0 / -0  
 12.1 TO 24.0 +.5 / -0  
 6.1 TO 12.0 +.25 / -0  
 .375 TO 6.0 +.125 / -0

**ARK-PLAS PRODUCTS, INC.**

TAX49-AN1  
 3/16" I.D. x 1/4" O.D.  
 1/32" WALL THICKNESS / 1,000' BULK SPOOL

BLACK TUBING

MATERIAL: POLYURETHANE / ETHER BASED - 85 DUROMETER

FREE SAMPLES ARE AVAILABLE FOR TESTING. CONTACT CUSTOMER SERVICE

**PROPRIETARY AND CONFIDENTIAL**

THE INFORMATION CONTAINED IN THIS DRAWING IS THE SOLE PROPERTY OF ARK-PLAS PRODUCTS, INC. ANY REPRODUCTION IN PART OR AS A WHOLE WITHOUT THE WRITTEN PERMISSION OF ARK-PLAS PRODUCTS, INC. IS PROHIBITED.

SIZE	JOB # APT103	DRAWN BY: <i>KAH</i>	REV. LEVEL
<b>A</b>	SCALE: 2:1 DO NOT SCALE DRAWING	SHEET 1 OF 1	<b>A</b>