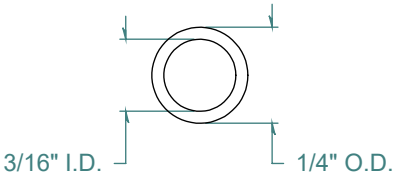
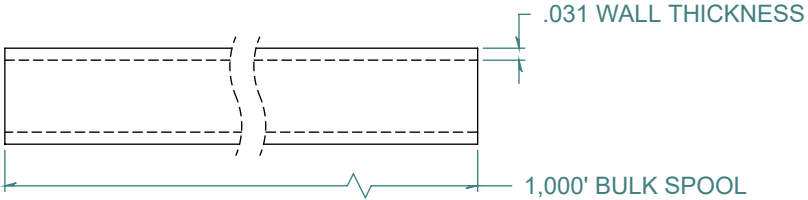
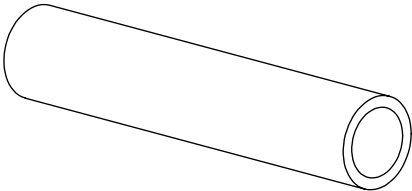


REVISION HISTORY			
REV.	DESCRIPTION	DATE	APPROVED
A	PRINT RELEASE DATE	05/13/2009	KAH
B	ECOR #A0758	05/09/2012	KAH
C	Wall Thickness Fix	6/18/2021	JWM



DIMENSIONS ARE IN INCHES UNLESS SPECIFIED. TOLERANCES ARE:

INNER DIAMETER +/- .005
 OUTER DIAMETER +/- .005
 WALL THICKNESS +/- .003

LENGTH TOLERANCES ARE:

120. OR MORE +5% / -0
 24.1 TO 120. +1.0 / -0
 12.1 TO 24.0 +.5 / -0
 6.1 TO 12.0 +.25 / -0
 .375 TO 6.0 +.125 / -0

ARK-PLAS PRODUCTS, INC.

TEX89-TE0
 3/16" I.D. x 1/4" O.D.
 .031 WALL THICKNESS / 1,000' BULK SPOOL

NATURAL TUBING

MATERIAL: POLYETHYLENE - 44 DUROMETER

FREE SAMPLES ARE AVAILABLE FOR TESTING. CONTACT CUSTOMER SERVICE

PROPRIETARY AND CONFIDENTIAL

THE INFORMATION CONTAINED IN THIS DRAWING IS THE SOLE PROPERTY OF ARK-PLAS PRODUCTS, INC. ANY REPRODUCTION IN PART OR AS A WHOLE WITHOUT THE WRITTEN PERMISSION OF ARK-PLAS PRODUCTS, INC. IS PROHIBITED.

SIZE	JOB # APT033	DRAWN BY: KAH	REV. LEVEL
A	SCALE: 2:1 DO NOT SCALE DRAWING	SHEET 1 OF 1	C