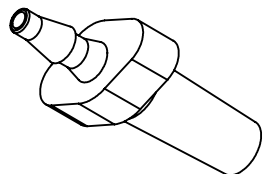
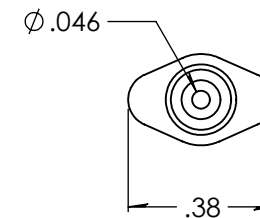
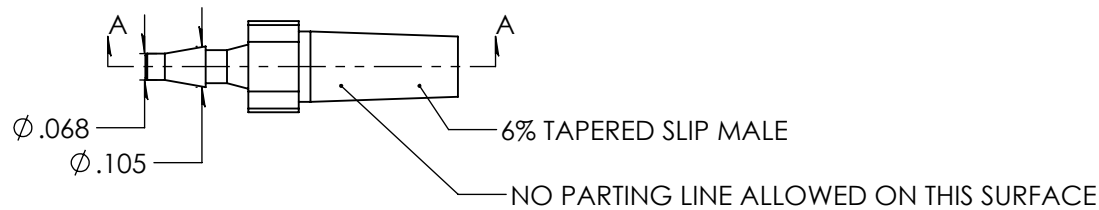


Revision History

Rev.	Description	Date	Approved
A	Redrawn w/Change	10/02/2009	KAH
B	ECOR #A0144	10/02/2009	KAH
C	Length Update	11/08/2019	KAH



SECTION A-A
SCALE 2 : 1



Unless otherwise specified tolerances are in inches

SAE Tolerances

Fractions:	+/- .015
2 Place Decimal:	+/- .010
3 Place Decimal:	+/- .005
Angle:	+/- 1/2*

Material:

Natural Polycarbonate
Calibre 201-15

ARKPLAS

Part #: LCX71-YC0

Description:
1/16" Barbed Male Slip Luer
Luer Designed to ISO Standards

A	Job#: LCX71	Sheet 1 of 1	C
	Scale: 2:1	Drawn By: JWM	