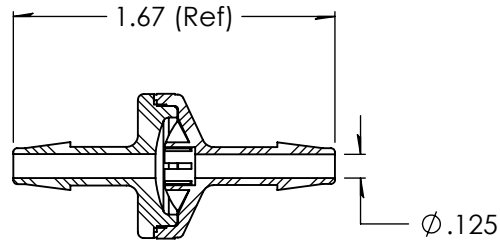
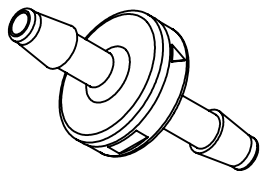
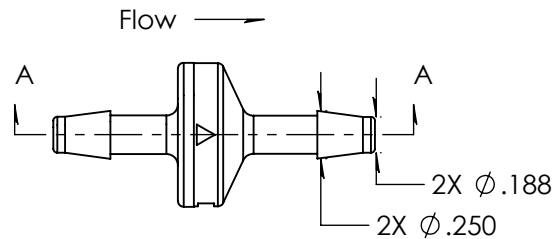


Revision History

Rev.	Description	Date	Approved
A	Print Release Date	11/01/2023	JWM
B	Female half update	06/24/2024	JWM



SECTION A-A



Unless otherwise specified tolerances are in inches

SAE Tolerances

Fractions:	+/- .015
2 Place Decimal:	+/- .010
3 Place Decimal:	+/- .005
Angle:	+/- 1/2*

Material:

Natural Polypropylene
P4C5Z-027

ARKPLAS

Part #: HAX56-PP0

Description:
3/16" x 3/16" Check Valve
Silicone Diaphragm

A	Job#: HAX56	Sheet 1 of 1	Rev
	Scale: 1:1	Drawn By: JWM	B