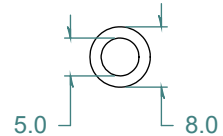
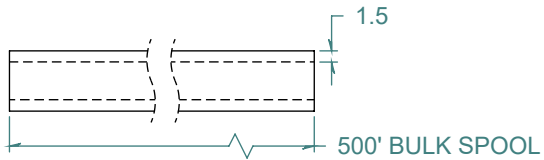
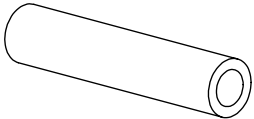


REVISION HISTORY			
REV.	DESCRIPTION	DATE	APPROVED
A	REDRAWN w/o CHANGE	07/23/2009	KAH



DIMENSIONS ARE IN METRIC UNLESS SPECIFIED. TOLERANCES ARE:

INNER DIAMETER +/- .127  
 OUTER DIAMETER +/- .127  
 WALL THICKNESS +/- .076

LENGTH TOLERANCES ARE:

3048. OR MORE	+5% / -0
612.14 TO 3048.	+25.4 / -0
307.34 TO 609.6	+12.7 / -0
154.94 TO 304.8	+6.35 / -0
9.525 TO 152.4	+3.175 / -0

**ARK-PLAS PRODUCTS, INC.**

TAX67-AN0  
 5.0 x 8.0 / 500' BULK SPOOL

TUBING

FREE SAMPLES ARE AVAILABLE FOR TESTING. CONTACT CUSTOMER SERVICE

**PROPRIETARY AND CONFIDENTIAL**

THE INFORMATION CONTAINED IN THIS DRAWING IS THE SOLE PROPERTY OF ARK-PLAS PRODUCTS, INC. ANY REPRODUCTION IN PART OR AS A WHOLE WITHOUT THE WRITTEN PERMISSION OF ARK-PLAS PRODUCTS, INC. IS PROHIBITED.

MATERIAL: POLYURETHANE - 85 DUROMETER, NATURAL			
SIZE	JOB #	DRAWN BY:	REV. LEVEL
<b>A</b>	APT121	KAH	<b>A</b>
SCALE: 1:1 DO NOT SCALE DRAWING		SHEET 1 OF 1	