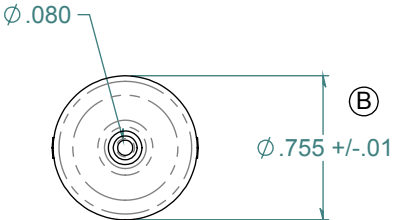
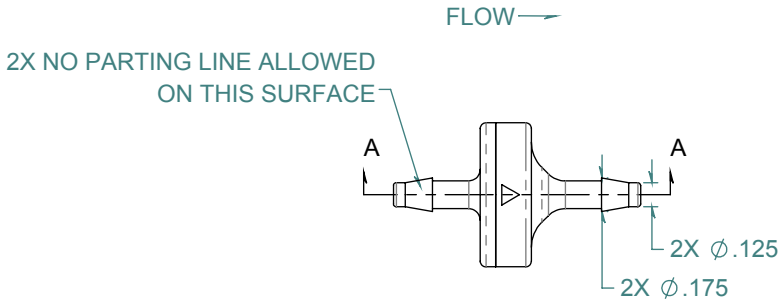
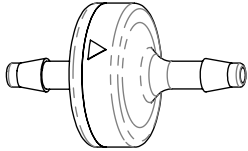
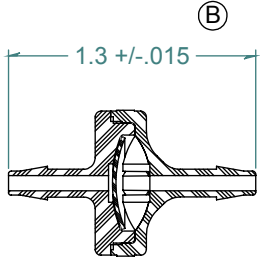


| REVISION HISTORY |                    |            |          |
|------------------|--------------------|------------|----------|
| REV.             | DESCRIPTION        | DATE       | APPROVED |
| A                | PRINT RELEASE DATE | 02/16/2010 | KAH      |
| B                | ECOR #A0570        | 02/16/2010 | KAH      |
| C                | ECO #A1212         | 02/04/2020 | KAH      |

SECTION A-A  
SCALE 1 : 1



DIMENSIONS ARE IN INCHES UNLESS SPECIFIED. TOLERANCES ARE:  
 FRACTIONS +/- .015  
 2 PLACE DECIMAL +/- .010  
 3 PLACE DECIMAL +/- .005  
 ANGLE +/- 1/2°

**ARK-PLAS PRODUCTS, INC.**

HAX18-YC0  
 1/8 x 1/8 STANDARD CHECK VALVE  
 SILICONE DIAPHRAGM

MATERIAL:  
 POLYCARBONATE, NATURAL

FINISH:  
 RMS 109.2 / POLISHED BARBS

FREE SAMPLES ARE AVAILABLE FOR TESTING. CONTACT CUSTOMER SERVICE

**PROPRIETARY AND CONFIDENTIAL**

THE INFORMATION CONTAINED IN THIS DRAWING IS THE SOLE PROPERTY OF ARK-PLAS PRODUCTS, INC. ANY REPRODUCTION IN PART OR AS A WHOLE WITHOUT THE WRITTEN PERMISSION OF ARK-PLAS PRODUCTS, INC. IS PROHIBITED.

|          |                                    |              |            |
|----------|------------------------------------|--------------|------------|
| SIZE     | JOB #                              | DRAWN BY:    | REV. LEVEL |
| <b>A</b> | MP137A<br>AP893                    | KAH          | <b>C</b>   |
|          | SCALE: 1:1<br>DO NOT SCALE DRAWING | SHEET 1 OF 1 |            |