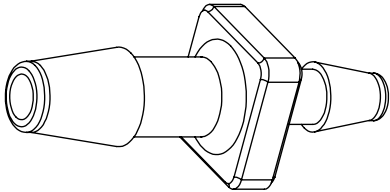
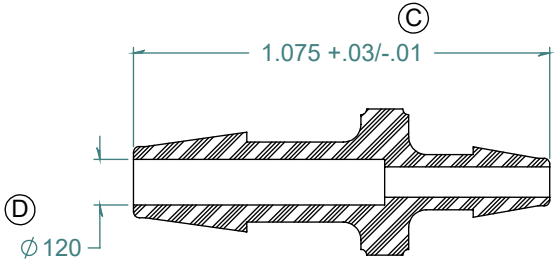
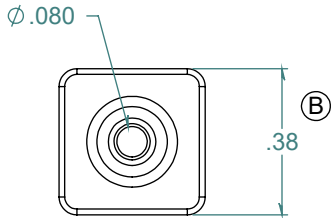
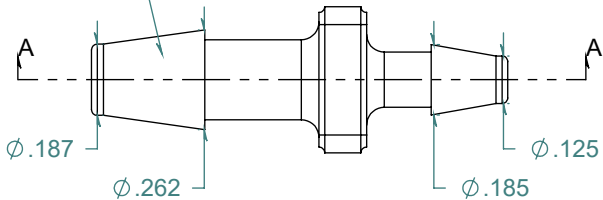


| REVISION HISTORY | | | |
|------------------|-------------------|------------|----------|
| REV. | DESCRIPTION | DATE | APPROVED |
| A | REDRAWN w/ CHANGE | 08/27/2009 | KAH |
| B | ECOR #A0144 | 08/27/2009 | KAH |
| C | ECOR #A0414 | 08/27/2009 | KAH |
| D | ECOR #0954 | 05/13/2016 | KAH |

SECTION A-A



2X NO PARTING LINE ALLOWED ON THIS SURFACE



DIMENSIONS ARE IN INCHES UNLESS SPECIFIED. TOLERANCES ARE:
 FRACTIONS +/- .015
 2 PLACE DECIMAL +/- .010
 3 PLACE DECIMAL +/- .005
 ANGLES NOTED

ARK-PLAS PRODUCTS, INC.

MAD65-YC0
 3/16 x 1/8 PREMIUM GRADE
 BARBED REDUCING STRAIGHT CONNECTOR

MATERIAL:
 POLYCARBONATE, NATURAL

FINISH:
 RMS 109.2 / POLISHED BARBS

FREE SAMPLES ARE AVAILABLE FOR TESTING. CONTACT CUSTOMER SERVICE

PROPRIETARY AND CONFIDENTIAL

THE INFORMATION CONTAINED IN THIS DRAWING IS THE SOLE PROPERTY OF ARK-PLAS PRODUCTS, INC. ANY REPRODUCTION IN PART OR AS A WHOLE WITHOUT THE WRITTEN PERMISSION OF ARK-PLAS PRODUCTS, INC. IS PROHIBITED.

| | | | |
|----------|------------------------------------|----------------------|------------|
| SIZE | JOB # MP039 | DRAWN BY: <i>KAH</i> | REV. LEVEL |
| A | SCALE: 2:1 DO NOT SCALE DRAWING | SHEET 1 OF 1 | D |