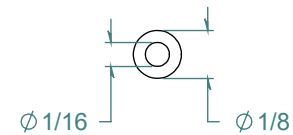
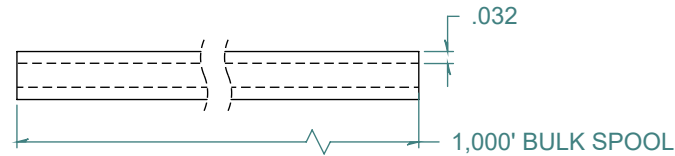
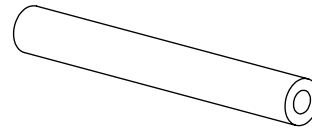


REVISION HISTORY			
REV.	DESCRIPTION	DATE	APPROVED
A	REDRAWN w/o CHANGE	05/12/2009	KAH
B	ECOR #A0758	05/09/2012	KAH



DIMENSIONS ARE IN INCHES UNLESS SPECIFIED. TOLERANCES ARE:

INNER DIAMETER +/- .005
 OUTER DIAMETER +/- .005
 WALL THICKNESS +/- .003

LENGTH TOLERANCES ARE:

120. OR MORE +5% / -0
 24.1 TO 120. +1.0 / -0
 12.1 TO 24.0 +.5 / -0
 6.1 TO 12.0 +.25 / -0
 .375 TO 6.0 +.125 / -0

ARK-PLAS PRODUCTS, INC.

TEX88-TE0
 Ø 1/16 ID x Ø 1/8 / 1,000' BULK SPOOL

TUBING

MATERIAL: POLYETHYLENE 44D, NATURAL

FREE SAMPLES ARE AVAILABLE FOR TESTING. CONTACT CUSTOMER SERVICE

PROPRIETARY AND CONFIDENTIAL

THE INFORMATION CONTAINED IN THIS DRAWING IS THE SOLE PROPERTY OF ARK-PLAS PRODUCTS, INC. ANY REPRODUCTION IN PART OR AS A WHOLE WITHOUT THE WRITTEN PERMISSION OF ARK-PLAS PRODUCTS, INC. IS PROHIBITED.

SIZE	JOB #	DRAWN BY:	REV. LEVEL
A	APT031	KAH	B
SCALE: 2:1 DO NOT SCALE DRAWING		SHEET 1 OF 1	