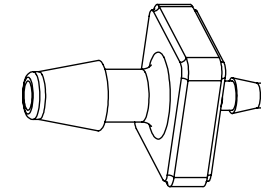
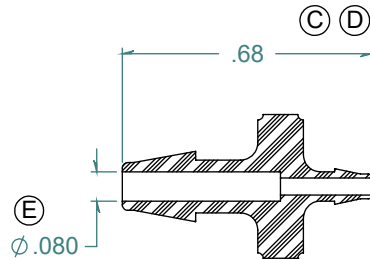


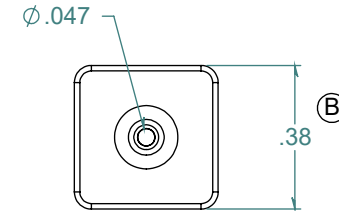
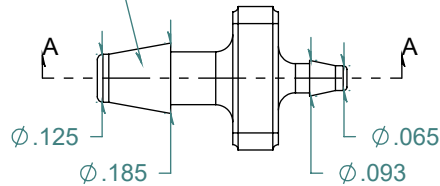
REVISION HISTORY

REV.	DESCRIPTION	DATE	APPROVED
A	REDRAWN w/ CHANGE	08/12/2009	KAH
B	ECOR #A0144	08/12/2009	KAH
C	ECOR #A0403	08/12/2009	KAH
D	ECOR #A0777	08/29/2012	KAH
E	ECOR #A0954	05/13/2016	KAH

SECTION A-A



2X NO PARTING LINE ALLOWED ON THIS SURFACE



DIMENSIONS ARE IN INCHES UNLESS SPECIFIED. TOLERANCES ARE:
 FRACTIONS +/- .015
 2 PLACE DECIMAL +/- .010
 3 PLACE DECIMAL +/- .005
 ANGLES NOTED

ARK-PLAS PRODUCTS, INC.

MAD51-DF0
 1/8 x 1/16 PREMIUM GRADE
 BARBED REDUCING STRAIGHT CONNECTOR

FREE SAMPLES ARE AVAILABLE FOR TESTING. CONTACT CUSTOMER SERVICE

MATERIAL: KYNAR, NATURAL

FINISH: RMS 109.2 / POLISHED BARBS

SIZE A	JOB # MP027	DRAWN BY: <i>KAH</i>	REV. LEVEL E
SCALE: 2:1 DO NOT SCALE DRAWING		SHEET 1 OF 1	

PROPRIETARY AND CONFIDENTIAL

THE INFORMATION CONTAINED IN THIS DRAWING IS THE SOLE PROPERTY OF ARK-PLAS PRODUCTS, INC. ANY REPRODUCTION IN PART OR AS A WHOLE WITHOUT THE WRITTEN PERMISSION OF ARK-PLAS PRODUCTS, INC. IS PROHIBITED.