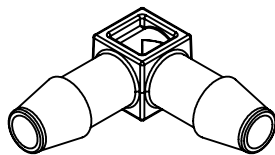
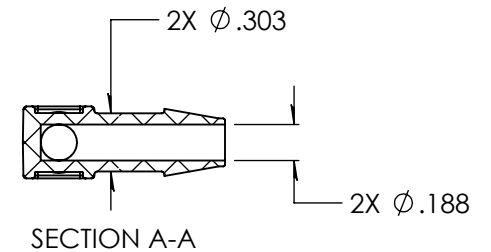
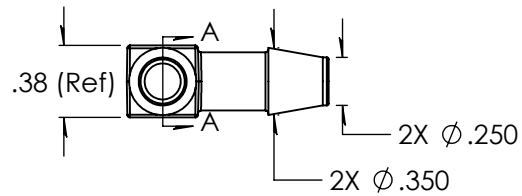
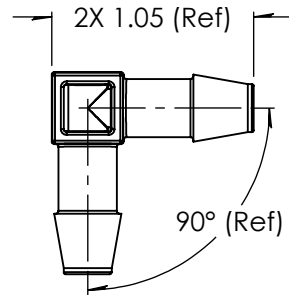


### Revision History

Rev.	Description	Date	Approved
A	Print release date	10/01/2009	KAH
B	ECOR #A0144	10/01/2009	KAH
C	ECOR #A0467	10/01/2009	KAH
D	ECOR #A1023	05/17/2017	KAH
E	ECO	04/27/2023	JWM



Unless otherwise specified tolerances are in inches

#### SAE Tolerances

Fractions:	+/- .015
2 Place Decimal:	+/- .010
3 Place Decimal:	+/- .005
Angle:	+/- 1/2*

**Material:**  
White Nylon  
101FNC010

# ARKPLAS

Part #: MCX87-NY2

Description:  
1/4" x 1/4" Barbed Elbow Connector

<b>A</b>	Size	Job#: MCX87	Sheet 1 of 1	<b>E</b>
	Scale: 1:1	Drawn By: JWM		