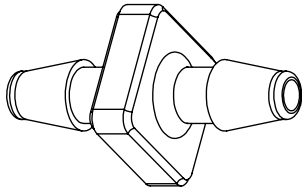
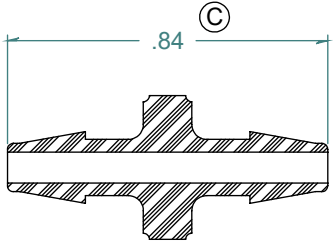
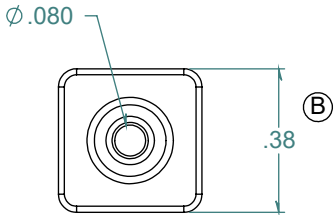
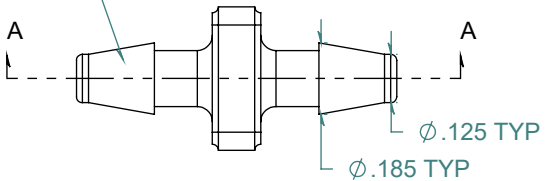


REVISION HISTORY			
REV.	DESCRIPTION	DATE	APPROVED
A	PART ISSUE DATE	08/10/2009	KAH
B	ECOR #A0144	08/10/2009	KAH
C	ECOR #A0399	08/10/2009	KAH

SECTION A-A



2X NO PARTING LINE ALLOWED ON THIS SURFACE



DIMENSIONS ARE IN INCHES UNLESS SPECIFIED. TOLERANCES ARE:
 FRACTIONS +/- .015
 2 PLACE DECIMAL +/- .010
 3 PLACE DECIMAL +/- .005
 ANGLES NOTED

ARK-PLAS PRODUCTS, INC.

MAC40-DF0
 1/8 x 1/8 PREMIUM GRADE
 BARBED STRAIGHT CONNECTOR

MATERIAL: KYNAR, NATURAL
 FINISH: RMS 109.2 / POLISHED BARBED

FREE SAMPLES ARE AVAILABLE FOR TESTING. CONTACT CUSTOMER SERVICE

PROPRIETARY AND CONFIDENTIAL
 THE INFORMATION CONTAINED IN THIS DRAWING IS THE SOLE PROPERTY OF ARK-PLAS PRODUCTS, INC. ANY REPRODUCTION IN PART OR AS A WHOLE WITHOUT THE WRITTEN PERMISSION OF ARK-PLAS PRODUCTS, INC. IS PROHIBITED.

SIZE	JOB # AP611	DRAWN BY: <i>KAH</i>	REV. LEVEL
A	SCALE: 2:1 DO NOT SCALE DRAWING	SHEET 1 OF 1	C