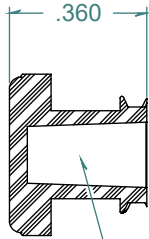
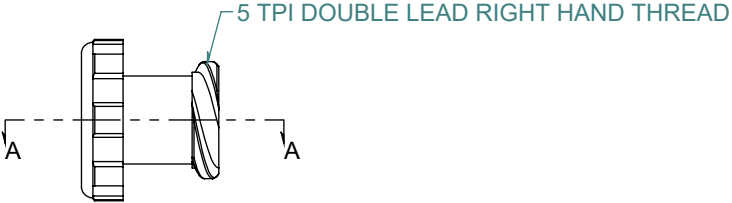
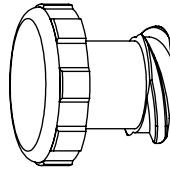


REVISION HISTORY			
REV.	DESCRIPTION	DATE	APPROVED
A	REDRAWN w/ CHANGE	10/28/2009	KAH
B	ECOR #A0169	10/28/2009	KAH

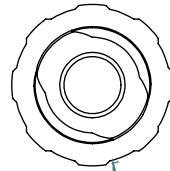
SECTION A-A
SCALE 2 : 1



6% TAPERED FEMALE LUER



5 TPI DOUBLE LEAD RIGHT HAND THREAD



Ⓟ
Ø .425 +/- .01

DIMENSIONS ARE IN INCHES UNLESS SPECIFIED. TOLERANCES ARE:
 FRACTIONS +/- .015
 2 PLACE DECIMAL +/- .010
 3 PLACE DECIMAL +/- .005
 ANGLES NOTED

ARK-PLAS PRODUCTS, INC.

LPC11-PP0
FEMALE LUER PLUG

FREE SAMPLES ARE AVAILABLE FOR TESTING. CONTACT CUSTOMER SERVICE

MATERIAL:
POLYPROPYLENE, NATURAL

LUER DESIGNED TO **ISO** STANDARDS

FINISH:
RMS 109.2 / POLISHED LUER

SIZE A	JOB # AP165	DRAWN BY: <i>KAH</i>	REV. LEVEL B
SCALE: 2:1 DO NOT SCALE DRAWING		SHEET 1 OF 1	

PROPRIETARY AND CONFIDENTIAL
 THE INFORMATION CONTAINED IN THIS DRAWING IS THE SOLE PROPERTY OF ARK-PLAS PRODUCTS, INC. ANY REPRODUCTION IN PART OR AS A WHOLE WITHOUT THE WRITTEN PERMISSION OF ARK-PLAS PRODUCTS, INC. IS PROHIBITED.