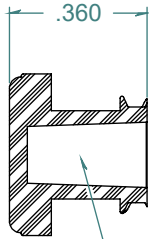
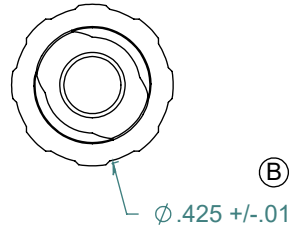
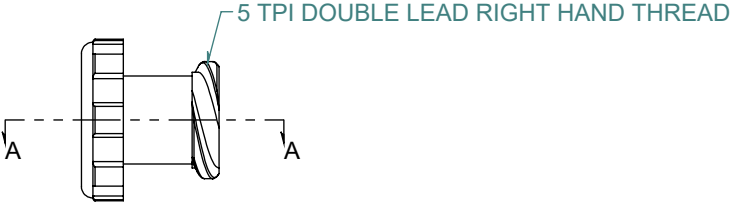
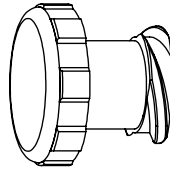


REVISION HISTORY			
REV.	DESCRIPTION	DATE	APPROVED
A	REDRAWN w/ CHANGE	10/28/2009	KAH
B	ECOR #A0169	10/28/2009	KAH

SECTION A-A  
SCALE 2 : 1



6% TAPERED FEMALE LUER



DIMENSIONS ARE IN INCHES UNLESS SPECIFIED. TOLERANCES ARE:  
 FRACTIONS +/- .015  
 2 PLACE DECIMAL +/- .010  
 3 PLACE DECIMAL +/- .005  
 ANGLES NOTED

**ARK-PLAS PRODUCTS, INC.**

LPC11-NY0  
FEMALE LUER PLUG

MATERIAL:  
NYLON, NATURAL

LUER DESIGNED TO **ISO** STANDARDS

FINISH:  
RMS 109.2 / POLISHED LUER

SIZE <b>A</b>	JOB # AP165	DRAWN BY: <i>KAH</i>	REV. LEVEL <b>B</b>
SCALE: 2:1 DO NOT SCALE DRAWING		SHEET 1 OF 1	

FREE SAMPLES ARE AVAILABLE FOR TESTING. CONTACT CUSTOMER SERVICE

**PROPRIETARY AND CONFIDENTIAL**

THE INFORMATION CONTAINED IN THIS DRAWING IS THE SOLE PROPERTY OF ARK-PLAS PRODUCTS, INC. ANY REPRODUCTION IN PART OR AS A WHOLE WITHOUT THE WRITTEN PERMISSION OF ARK-PLAS PRODUCTS, INC. IS PROHIBITED.