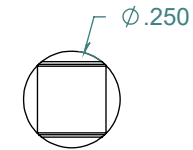
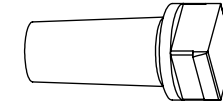
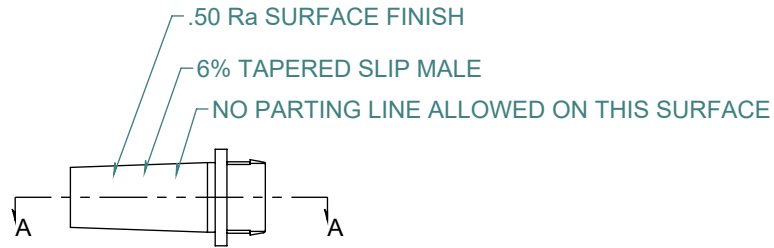
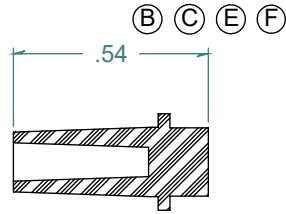


SECTION A-A  
SCALE 2 : 1



REVISION HISTORY			
REV.	DESCRIPTION	DATE	APPROVED
A	REDRAWN w/ CHANGE	10/30/2009	KAH
B	ECOR #A0505	10/30/2009	KAH
C	ECOR #A0865	08/26/2014	KAH
D	ECOR #A0872	10/01/2014	KAH
E	ECOR #A0873	10/02/2014	KAH
F	ECOR #A0877	12/18/2014	KAH

DIMENSIONS ARE IN INCHES UNLESS SPECIFIED. TOLERANCES ARE:  
 FRACTIONS +/- .015  
 2 PLACE DECIMAL +/- .010  
 3 PLACE DECIMAL +/- .005  
 ANGLES NOTED

**ARK-PLAS PRODUCTS, INC.**

LPA63-YC0  
 MALE SLIP LUER PLUG

MATERIAL:  
 POLYCARBONATE, NATURAL

LUER DESIGNED TO ISO STANDARDS

FINISH:  
 RMS 109.2 / POLISHED LUER

SIZE <b>A</b>	JOB # AP668	DRAWN BY: <i>KAH</i>	REV. LEVEL <b>F</b>
SCALE: 2:1 DO NOT SCALE DRAWING		SHEET 1 OF 1	

FREE SAMPLES ARE AVAILABLE FOR TESTING. CONTACT CUSTOMER SERVICE

**PROPRIETARY AND CONFIDENTIAL**

THE INFORMATION CONTAINED IN THIS DRAWING IS THE SOLE PROPERTY OF ARK-PLAS PRODUCTS, INC. ANY REPRODUCTION IN PART OR AS A WHOLE WITHOUT THE WRITTEN PERMISSION OF ARK-PLAS PRODUCTS, INC. IS PROHIBITED.