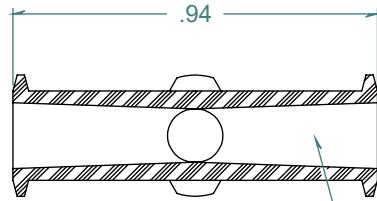
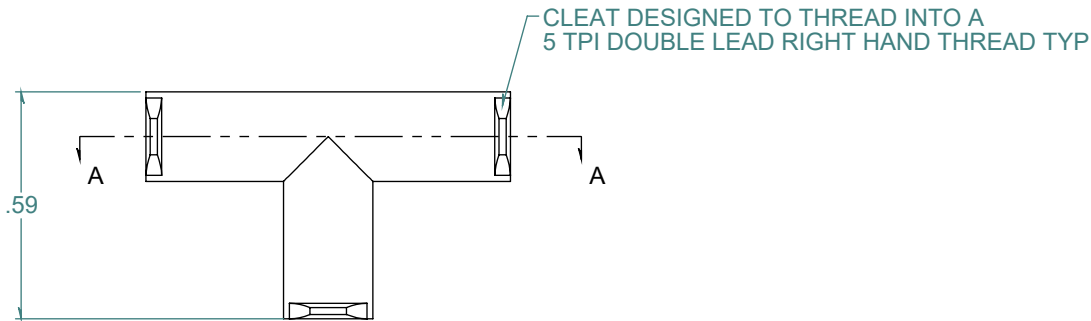
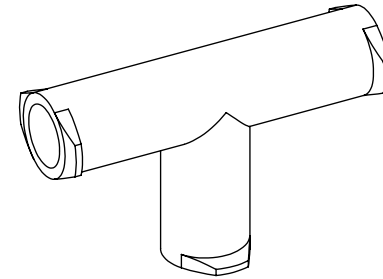


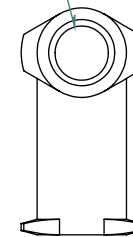
SECTION A-A



6% TAPER FEMALE LUER TYP



Ø .170  
Ø .133 TYP



REVISION HISTORY			
REV.	DESCRIPTION	DATE	APPROVED
A	REDRAWN w/o CHANGE	10/27/2009	KAH
B	ECOR #A0826	10/28/2013	KAH

DIMENSIONS ARE IN INCHES UNLESS SPECIFIED. TOLERANCES ARE:  
 FRACTIONS +/- .015  
 2 PLACE DECIMAL +/- .010  
 3 PLACE DECIMAL +/- .005  
 ANGLES NOTED

**ARK-PLAS PRODUCTS, INC.**

LNC69-YC0  
 FEMALE LUER x FEMALE LUER x FEMALE LUER TEE

FREE SAMPLES ARE AVAILABLE FOR TESTING. CONTACT CUSTOMER SERVICE

MATERIAL:  
 CLEAR POLYCARBONATE

LUERS DESIGNED TO **ISO** STANDARDS

FINISH:  
 RMS 109.2 / POLISHED LUERS

SIZE <b>A</b>	JOB # MP087	DRAWN BY: <i>KAH</i>	REV. LEVEL <b>B</b>
SCALE: 2:1 DO NOT SCALE DRAWING		SHEET 1 OF 1	

**PROPRIETARY AND CONFIDENTIAL**  
 THE INFORMATION CONTAINED IN THIS DRAWING IS THE SOLE PROPERTY OF ARK-PLAS PRODUCTS, INC. ANY REPRODUCTION IN PART OR AS A WHOLE WITHOUT THE WRITTEN PERMISSION OF ARK-PLAS PRODUCTS, INC. IS PROHIBITED.