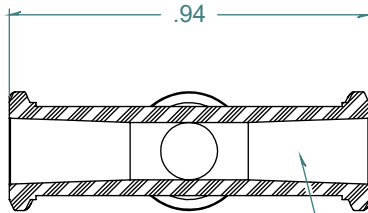
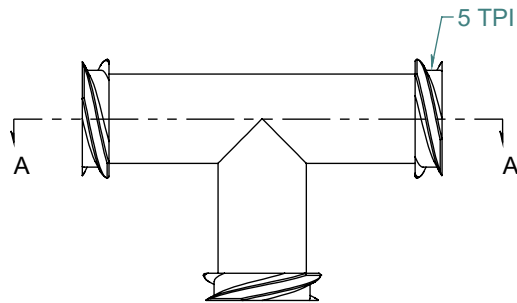
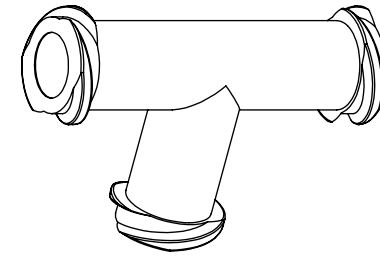


SECTION A-A

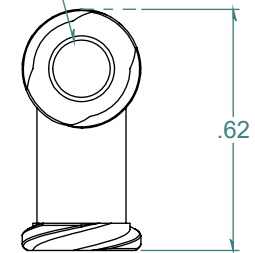


6% TAPERED FEMALE LUER TYP



5 TPI DOUBLE LEAD RIGHT HAND THREAD TYP

ⓑ  $\phi$ .170  
 $\phi$ .143 TYP



REVISION HISTORY			
REV.	DESCRIPTION	DATE	APPROVED
A	REDRAWN w/o CHANGE	10/28/2009	KAH
B	ECOR #A0825	10/28/2013	KAH

DIMENSIONS ARE IN INCHES UNLESS SPECIFIED. TOLERANCES ARE:  
 FRACTIONS +/- .015  
 2 PLACE DECIMAL +/- .010  
 3 PLACE DECIMAL +/- .005  
 ANGLES NOTED

**ARK-PLAS PRODUCTS, INC.**

LNC42-PP0  
 FEMALE TEE LUER ADAPTER

FREE SAMPLES ARE AVAILABLE FOR TESTING. CONTACT CUSTOMER SERVICE

MATERIAL:  
 POLYPROPYLENE, NATURAL

*LUERS DESIGNED TO ISO STANDARDS*

FINISH:  
 RMS 109.2 / POLISHED LUERS

SIZE	JOB # AP170	DRAWN BY: <i>KAH</i>	REV. LEVEL
<b>A</b>	SCALE: 2:1 DO NOT SCALE DRAWING	SHEET 1 OF 1	<b>B</b>

**PROPRIETARY AND CONFIDENTIAL**  
 THE INFORMATION CONTAINED IN THIS DRAWING IS THE SOLE PROPERTY OF ARK-PLAS PRODUCTS, INC. ANY REPRODUCTION IN PART OR AS A WHOLE WITHOUT THE WRITTEN PERMISSION OF ARK-PLAS PRODUCTS, INC. IS PROHIBITED.