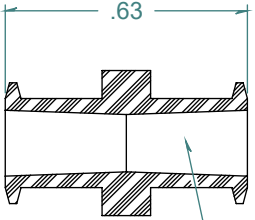
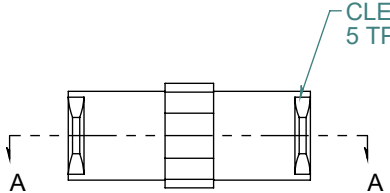
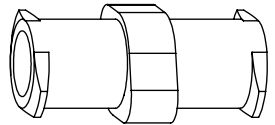


REVISION HISTORY			
REV.	DESCRIPTION	DATE	APPROVED
A	REDRAWN w/ CHANGE	10/27/2009	KAH
B	ECOR #A0149	10/27/2009	KAH

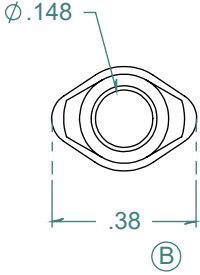
SECTION A-A



6% TAPERED FEMALE LUER (2)



CLEAT DESIGNED TO THREAD INTO A 5 TPI DOUBLE LEAD RIGHT HAND THREAD (2)



DIMENSIONS ARE IN INCHES UNLESS SPECIFIED. TOLERANCES ARE:  
 FRACTIONS +/- .015  
 2 PLACE DECIMAL +/- .010  
 3 PLACE DECIMAL +/- .005  
 ANGLES NOTED

**ARK-PLAS PRODUCTS, INC.**

LNA40-NYO  
 FEMALE LUER x FEMALE LUER CONNECTOR

MATERIAL:  
 NATURAL NYLON

LUERS DESIGNED TO **ISO** STANDARDS

FINISH:  
 RMS 109.2 / POLISHED LUERS

SIZE	JOB # MP086	DRAWN BY: <i>KAH</i>	REV. LEVEL
<b>A</b>	SCALE: 2:1 DO NOT SCALE DRAWING	SHEET 1 OF 1	<b>B</b>

FREE SAMPLES ARE AVAILABLE FOR TESTING. CONTACT CUSTOMER SERVICE

**PROPRIETARY AND CONFIDENTIAL**

THE INFORMATION CONTAINED IN THIS DRAWING IS THE SOLE PROPERTY OF ARK-PLAS PRODUCTS, INC. ANY REPRODUCTION IN PART OR AS A WHOLE WITHOUT THE WRITTEN PERMISSION OF ARK-PLAS PRODUCTS, INC. IS PROHIBITED.