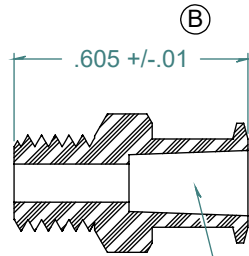


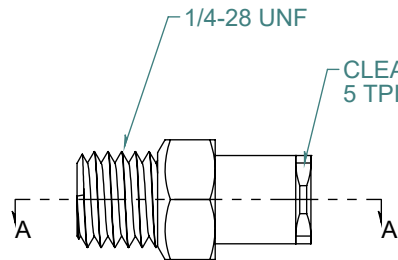
SECTION A-A
SCALE 2 : 1



ⓑ

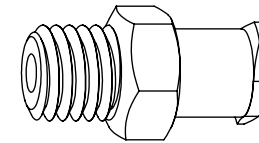
.605 +/- .01

6% TAPERED FEMALE LUER

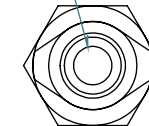


1/4-28 UNF

CLEAT DESIGNED TO THREAD INTO A
5 TPI DOUBLE LEAD RIGHT HAND THREAD



∅.100



5/16"

REVISION HISTORY			
REV.	DESCRIPTION	DATE	APPROVED
A	REDRAWN w/ CHANGE	10/27/2009	KAH
B	ECOR #A0498	10/27/2009	KAH

DIMENSIONS ARE IN INCHES UNLESS SPECIFIED. TOLERANCES ARE:
 FRACTIONS +/- .015
 2 PLACE DECIMAL +/- .010
 3 PLACE DECIMAL +/- .005
 ANGLES NOTED

ARK-PLAS PRODUCTS, INC.

LMX33-PP0
 1/4-28 UNF THREADED FEMALE LUER

FREE SAMPLES ARE AVAILABLE FOR TESTING. CONTACT CUSTOMER SERVICE

MATERIAL:
 POLYPROPYLENE, NATURAL

LUERS DESIGNED TO **ISO** STANDARDS

FINISH:
 RMS 109.2 / POLISHED LUER

SIZE	JOB #	DRAWN BY:	REV. LEVEL
A	MP085	KAH	B
SCALE: 2:1 DO NOT SCALE DRAWING		SHEET 1 OF 1	

PROPRIETARY AND CONFIDENTIAL
 THE INFORMATION CONTAINED IN THIS DRAWING IS THE SOLE PROPERTY OF
 ARK-PLAS PRODUCTS, INC. ANY REPRODUCTION IN PART OR AS A WHOLE
 WITHOUT THE WRITTEN PERMISSION OF ARK-PLAS PRODUCTS, INC. IS PROHIBITED.