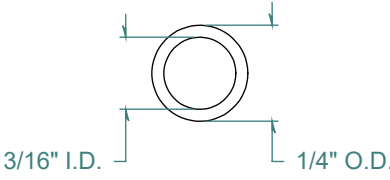
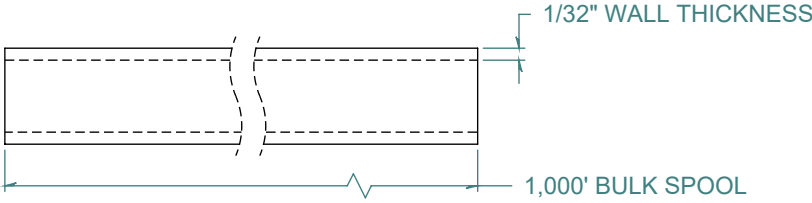
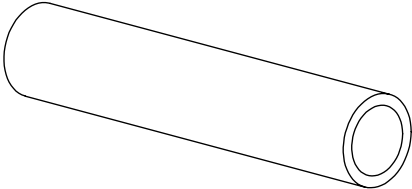


REVISION HISTORY			
REV.	DESCRIPTION	DATE	APPROVED
A	REDRAWN w/o CHANGE	05/04/2009	KAH



DIMENSIONS ARE IN INCHES UNLESS SPECIFIED. TOLERANCES ARE:

INNER DIAMETER	+/- .005
OUTER DIAMETER	+/- .005
WALL THICKNESS	+/- .003

LENGTH TOLERANCES ARE:

120. OR MORE	+5% / -0
24.1 TO 120.	+1.0 / -0
12.1 TO 24.0	+ .5 / -0
6.1 TO 12.0	+.25 / -0
.375 TO 6.0	+.125 / -0

**ARK-PLAS PRODUCTS, INC.**

TCX69-FA0  
 3/16" I.D. x 1/4" O.D.  
 1/32" WALL THICKNESS / 1,000' BULK SPOOL

NATURAL, CLEAR TUBING

MATERIAL: VINYL (PVC) - 68 DUROMETER

FREE SAMPLES ARE AVAILABLE FOR TESTING. CONTACT CUSTOMER SERVICE

**PROPRIETARY AND CONFIDENTIAL**

THE INFORMATION CONTAINED IN THIS DRAWING IS THE SOLE PROPERTY OF ARK-PLAS PRODUCTS, INC. ANY REPRODUCTION IN PART OR AS A WHOLE WITHOUT THE WRITTEN PERMISSION OF ARK-PLAS PRODUCTS, INC. IS PROHIBITED.

SIZE <b>A</b>	JOB # APT067	DRAWN BY: <i>KAH</i>	REV. LEVEL <b>A</b>
SCALE: 2:1 DO NOT SCALE DRAWING		SHEET 1 OF 1	