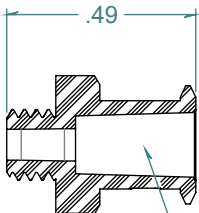
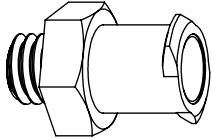


REVISION HISTORY			
REV.	DESCRIPTION	DATE	APPROVED
A	PRINT RELEASE DATE	06/04/2013	KAH
B	ECOR #A0890	08/10/2015	KAH
C	ECO #A1196	11/27/2019	KAH

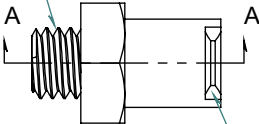
SECTION A-A



6% TAPERED FEMALE LUER

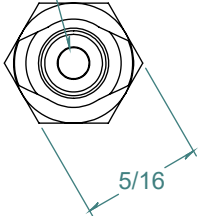


10-32 UNF



CLEAT DESIGNED TO THREAD INTO A 5 TPI DOUBLE LEAD RIGHT HAND THREAD

Ø.078



DIMENSIONS ARE IN INCHES UNLESS SPECIFIED. TOLERANCES ARE:

FRACTIONS	+/- .015
2 PLACE DECIMAL	+/- .010
3 PLACE DECIMAL	+/- .005
ANGLE	+/- 1/2°

**ARK-PLAS PRODUCTS, INC.**

LMX24-NY0  
10-32 UNF FEMALE LUG STYLE LUER

FREE SAMPLES ARE AVAILABLE FOR TESTING. CONTACT CUSTOMER SERVICE

MATERIAL:  
NYLON, NATURAL

*LUERS DESIGNED TO ISO STANDARDS*

FINISH:  
RMS 109.2

SIZE	JOB # AP805	DRAWN BY: <i>KAH</i>	REV. LEVEL
<b>A</b>	SCALE: 2:1 DO NOT SCALE DRAWING	SHEET 1 OF 1	<b>C</b>

**PROPRIETARY AND CONFIDENTIAL**  
THE INFORMATION CONTAINED IN THIS DRAWING IS THE SOLE PROPERTY OF ARK-PLAS PRODUCTS, INC. ANY REPRODUCTION IN PART OR AS A WHOLE WITHOUT THE WRITTEN PERMISSION OF ARK-PLAS PRODUCTS, INC. IS PROHIBITED.