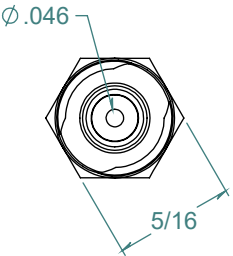
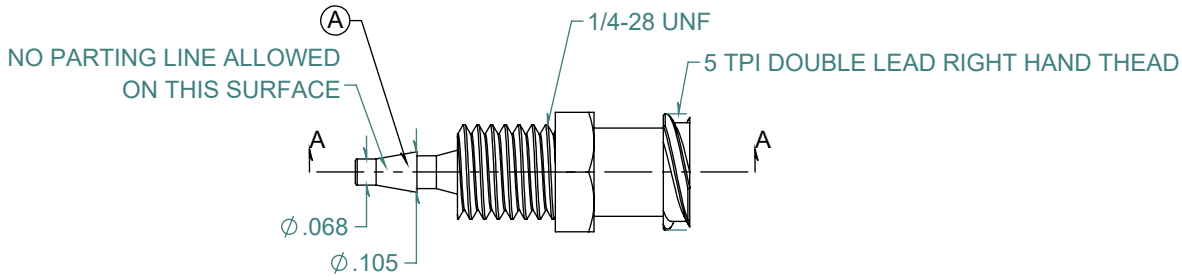
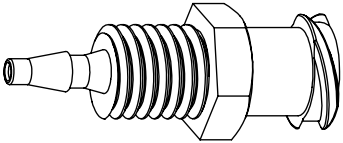
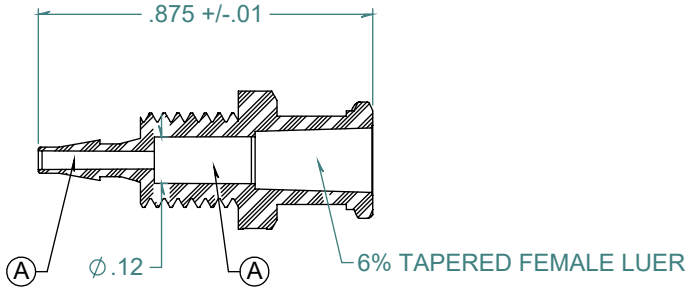


| REVISION HISTORY | | | |
|------------------|--------------------|------------|----------|
| REV. | DESCRIPTION | DATE | APPROVED |
| A | ECOR #A1075 | 12/01/2017 | KAH |
| B | PRINT RELEASE DATE | 05/24/2018 | KAH |

SECTION A-A



FREE SAMPLES ARE AVAILABLE FOR TESTING. CONTACT CUSTOMER SERVICE

DIMENSIONS ARE IN INCHES UNLESS SPECIFIED. TOLERANCES ARE:
 FRACTIONS +/- .015
 2 PLACE DECIMAL +/- .010
 3 PLACE DECIMAL +/- .005
 ANGLE NOTED

MATERIAL:
 POLYCARBONATE, NATURAL

FINISH:
 RMS 109.2, POLISHED BARB

ARK-PLAS PRODUCTS, INC.

LJX40-YC0
 1/16 FEMALE BULKHEAD LUER

LUER DESIGNED TO ISO STANDARD

PROPRIETARY AND CONFIDENTIAL
 THE INFORMATION CONTAINED IN THIS DRAWING IS THE SOLE PROPERTY OF ARK-PLAS PRODUCTS, INC. ANY REPRODUCTION IN PART OR AS A WHOLE WITHOUT THE WRITTEN PERMISSION OF ARK-PLAS PRODUCTS, INC. IS PROHIBITED.

| | | | |
|----------|------------------------------------|----------------------|------------|
| SIZE | JOB # AP761 | DRAWN BY: <i>KAH</i> | REV. LEVEL |
| A | SCALE: 2:1 DO NOT SCALE DRAWING | SHEET 1 OF 1 | B |