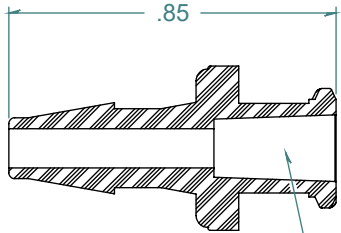
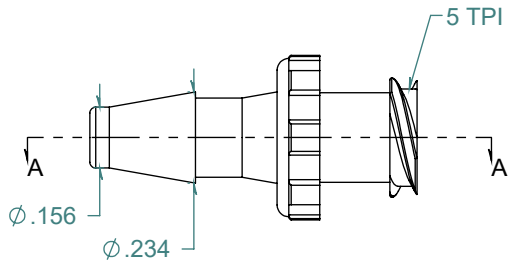
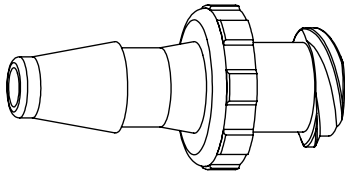


REVISION HISTORY			
REV.	DESCRIPTION	DATE	APPROVED
A	REDRAWN w/ CHANGE	10/21/2009	KAH
B	ECOR #A0144	10/21/2009	KAH

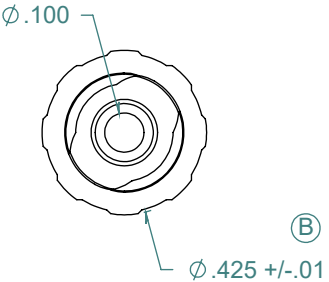
SECTION A-A



6% TAPERED FEMALE LUER



5 TPI DOUBLE LEAD RIGHT HAND THREAD



FREE SAMPLES ARE AVAILABLE FOR TESTING. CONTACT CUSTOMER SERVICE

DIMENSIONS ARE IN INCHES UNLESS SPECIFIED. TOLERANCES ARE:
 FRACTIONS +/- .015
 2 PLACE DECIMAL +/- .010
 3 PLACE DECIMAL +/- .005
 ANGLES NOTED

ARK-PLAS PRODUCTS, INC.

LHX87-YC0
 5/32" BARBED FEMALE LUER w/ FULL THREAD

MATERIAL:
 CLEAR POLYCARBONATE

FINISH:
 RMS 109.2 / POLISHED LUER

LUER DESIGNED TO **ISO** STANDARDS

SIZE A	JOB # AP163	DRAWN BY: <i>KAH</i>	REV. LEVEL
SCALE: 2:1 DO NOT SCALE DRAWING	SHEET 1 OF 1		B

PROPRIETARY AND CONFIDENTIAL
 THE INFORMATION CONTAINED IN THIS DRAWING IS THE SOLE PROPERTY OF ARK-PLAS PRODUCTS, INC. ANY REPRODUCTION IN PART OR AS A WHOLE WITHOUT THE WRITTEN PERMISSION OF ARK-PLAS PRODUCTS, INC. IS PROHIBITED.