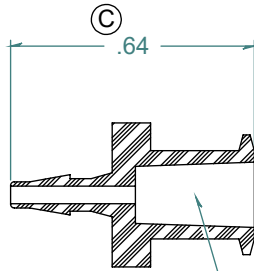
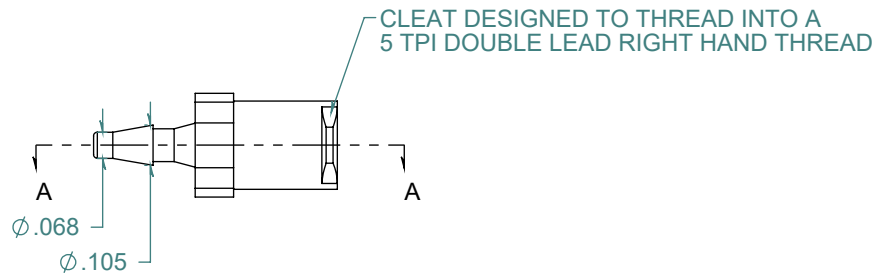
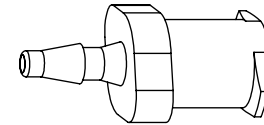


| REVISION HISTORY | | | |
|------------------|-------------------|------------|----------|
| REV. | DESCRIPTION | DATE | APPROVED |
| A | REDRAWN w/ CHANGE | 10/23/2009 | KAH |
| B | ECOR #A0149 | 10/23/2009 | KAH |
| C | ECOR #A0824 | 11/04/2013 | KAH |

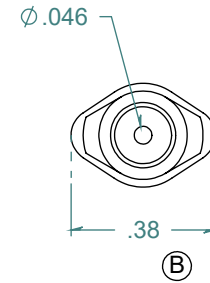
SECTION A-A
SCALE 2 : 1



6% TAPERED FEMALE LUER



CLEAT DESIGNED TO THREAD INTO A
5 TPI DOUBLE LEAD RIGHT HAND THREAD



DIMENSIONS ARE IN INCHES UNLESS SPECIFIED. TOLERANCES ARE:
 FRACTIONS +/- .015
 2 PLACE DECIMAL +/- .010
 3 PLACE DECIMAL +/- .005
 ANGLES NOTED

ARK-PLAS PRODUCTS, INC.

LHX70-PP0
1/16" BARBED FEMALE LUER

FREE SAMPLES ARE AVAILABLE FOR TESTING. CONTACT CUSTOMER SERVICE

MATERIAL:
NATURAL POLYPROPYLENE

LUER DESIGNED TO **ISO** STANDARDS

FINISH:
RMS 109.2 / POLISHED LUER

| | | | |
|------------------------------------|-------------|----------------------|------------------------|
| SIZE A | JOB # MP069 | DRAWN BY: <i>KAH</i> | REV. LEVEL C |
| SCALE: 2:1 DO NOT SCALE DRAWING | | SHEET 1 OF 1 | |

PROPRIETARY AND CONFIDENTIAL
 THE INFORMATION CONTAINED IN THIS DRAWING IS THE SOLE PROPERTY OF ARK-PLAS PRODUCTS, INC. ANY REPRODUCTION IN PART OR AS A WHOLE WITHOUT THE WRITTEN PERMISSION OF ARK-PLAS PRODUCTS, INC. IS PROHIBITED.