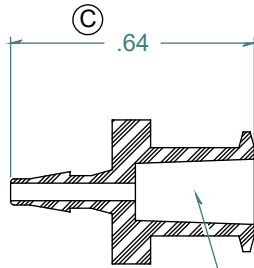
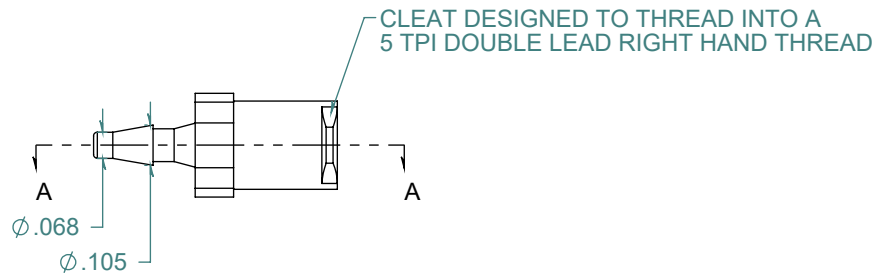
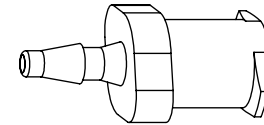


REVISION HISTORY			
REV.	DESCRIPTION	DATE	APPROVED
A	REDRAWN w/ CHANGE	10/23/2009	KAH
B	ECOR #A0149	10/23/2009	KAH
C	ECOR #A0824	10/24/2013	KAH

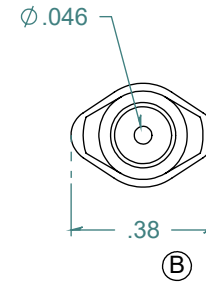
SECTION A-A
SCALE 2 : 1



6% TAPERED FEMALE LUER



CLEAT DESIGNED TO THREAD INTO A
5 TPI DOUBLE LEAD RIGHT HAND THREAD



FREE SAMPLES ARE AVAILABLE FOR TESTING. CONTACT CUSTOMER SERVICE

PROPRIETARY AND CONFIDENTIAL

THE INFORMATION CONTAINED IN THIS DRAWING IS THE SOLE PROPERTY OF ARK-PLAS PRODUCTS, INC. ANY REPRODUCTION IN PART OR AS A WHOLE WITHOUT THE WRITTEN PERMISSION OF ARK-PLAS PRODUCTS, INC. IS PROHIBITED.

DIMENSIONS ARE IN INCHES UNLESS SPECIFIED. TOLERANCES ARE:
 FRACTIONS +/- .015
 2 PLACE DECIMAL +/- .010
 3 PLACE DECIMAL +/- .005
 ANGLES NOTED

MATERIAL:
NATURAL NYLON

FINISH:
RMS 109.2 / POLISHED LUER

ARK-PLAS PRODUCTS, INC.

LHX70-NY0
1/16" BARBED FEMALE LUER

LUER DESIGNED TO **ISO** STANDARDS

SIZE	JOB #	DRAWN BY:	REV. LEVEL
A	MP069	KAH	C
SCALE: 2:1 DO NOT SCALE DRAWING		SHEET 1 OF 1	