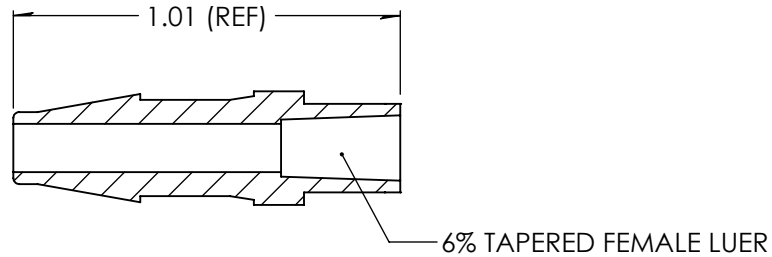
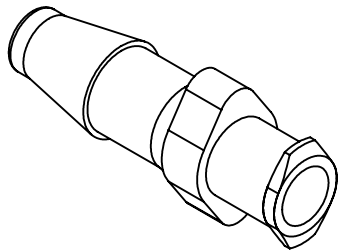
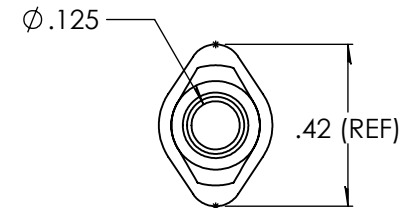
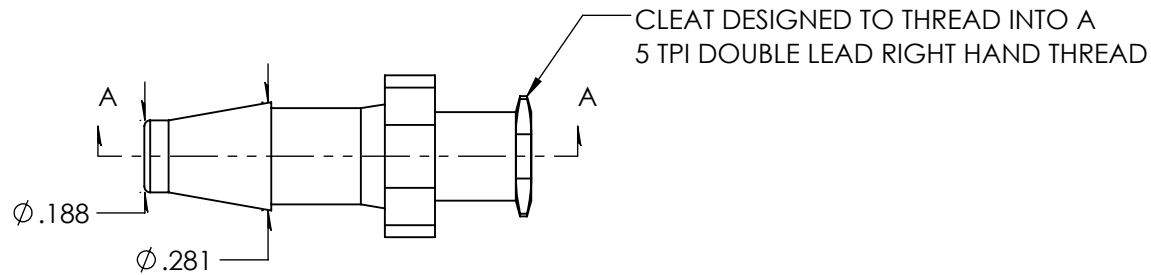


Revision History

Rev.	Description	Date	Approved
A	Redrawn w/Change	10/26/2009	KAH
B	Callouts Updated	03/14/2024	JWM



SECTION A-A  
SCALE 2 : 1



Unless otherwise specified tolerances are in inches

SAE Tolerances

Fractions:	+/- .015
2 Place Decimal:	+/- .010
3 Place Decimal:	+/- .005
Angle:	+/- 1/2*

Material:

Natural Polypropylene  
Invista P4C5Z-027

**ARKPLAS**

Part #: LHX61-PP0

Description:  
3/16" Barbed Female Luer  
Luer Designed to ISO Standards

Size	Job#:	Sheet	Rev
<b>A</b>	LHX61	1 of 1	<b>B</b>
	Scale: 2:1	Drawn By: JWM	