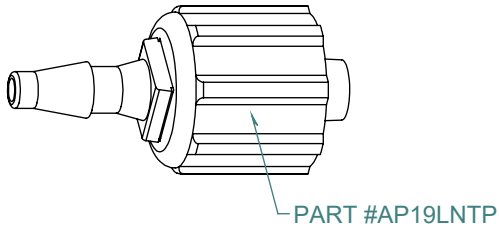
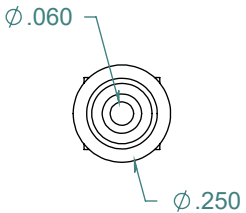
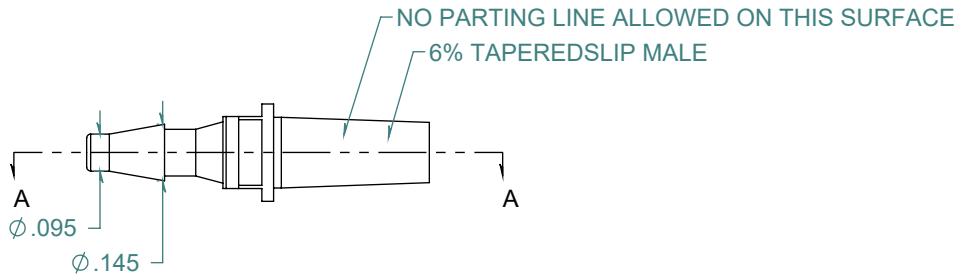
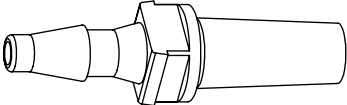
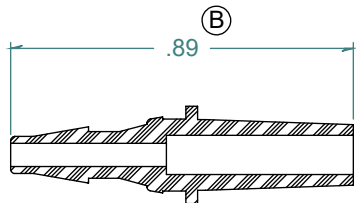


REVISION HISTORY			
REV.	DESCRIPTION	DATE	APPROVED
A	REDRAWN w/o CHANGE	10/30/2009	KAH
B	ECOR #A0506	10/30/2009	KAH

SECTION A-A



FREE SAMPLES ARE AVAILABLE FOR TESTING. CONTACT CUSTOMER SERVICE

DIMENSIONS ARE IN INCHES UNLESS SPECIFIED. TOLERANCES ARE:  
 FRACTIONS +/- .015  
 2 PLACE DECIMAL +/- .010  
 3 PLACE DECIMAL +/- .005  
 ANGLES NOTED

**ARK-PLAS PRODUCTS, INC.**

LDX83-PP0  
 3/32" BARBED MALE SLIP LUER  
 FOR USE w/ LOCKING NUT

MATERIAL:  
 NATURAL POLYPROPYLENE  
 FINISH:  
 RMS 109.2 / POLISHED LUER

LUER DESIGNED TO **ISO** STANDARDS  
 SIZE: **A** JOB # MP024 DRAWN BY: *KAH* REV. LEVEL: **B**  
 SCALE: 2:1 DO NOT SCALE DRAWING SHEET 1 OF 1

**PROPRIETARY AND CONFIDENTIAL**  
 THE INFORMATION CONTAINED IN THIS DRAWING IS THE SOLE PROPERTY OF ARK-PLAS PRODUCTS, INC. ANY REPRODUCTION IN PART OR AS A WHOLE WITHOUT THE WRITTEN PERMISSION OF ARK-PLAS PRODUCTS, INC. IS PROHIBITED.