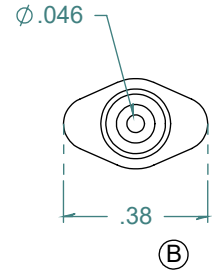
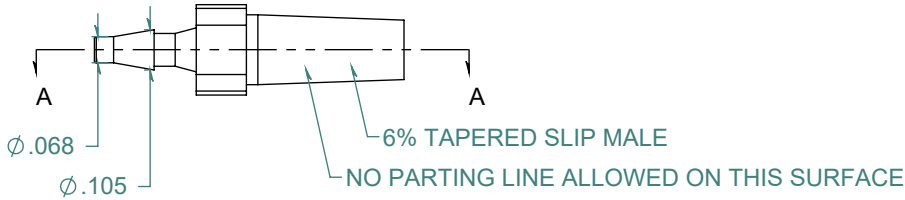
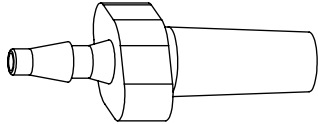
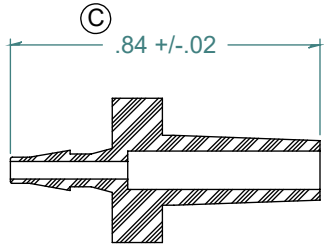


REVISION HISTORY			
REV.	DESCRIPTION	DATE	APPROVED
A	REDRAWN w/ CHANGE	10/02/2009	KAH
B	ECOR #A0144	10/02/2009	KAH
C	ECOR #A0939	03/16/2016	KAH

SECTION A-A



DIMENSIONS ARE IN INCHES UNLESS SPECIFIED. TOLERANCES ARE:  
 FRACTIONS  $\pm .015$   
 2 PLACE DECIMAL  $\pm .010$   
 3 PLACE DECIMAL  $\pm .005$   
 ANGLES NOTED

**ARK-PLAS PRODUCTS, INC.**

LCX71-NY0  
 1/16 MALE SLIP LUER

FREE SAMPLES ARE AVAILABLE FOR TESTING. CONTACT CUSTOMER SERVICE

MATERIAL:  
 NYLON, NATURAL

LUER DESIGNED TO **ISO** STANDARDS

**PROPRIETARY AND CONFIDENTIAL**  
 THE INFORMATION CONTAINED IN THIS DRAWING IS THE SOLE PROPERTY OF ARK-PLAS PRODUCTS, INC. ANY REPRODUCTION IN PART OR AS A WHOLE WITHOUT THE WRITTEN PERMISSION OF ARK-PLAS PRODUCTS, INC. IS PROHIBITED.

FINISH:  
 RMS 109.2

SIZE <b>A</b>	JOB # MP279	DRAWN BY: <i>KAH</i>	REV. LEVEL <b>C</b>
SCALE: 2:1 DO NOT SCALE DRAWING		SHEET 1 OF 1	